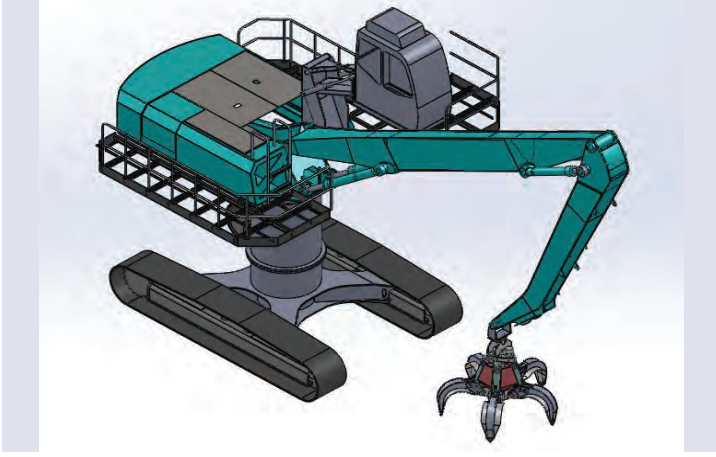


ELLEÇLEME MAKİNELERİ
MATERIAL HANDLING MACHINES

KAMA



Vinçlerimizin tasarımı, konusunda uzman mühendislerimiz tarafından yapılmaktadır. Tasarım aşamasında bilgisayar ortamında gerekli yük kontrolleri yapılmaktadır. Vinçlerimiz DIN 15018 normu H1B3 sınıfına göre tasarlanmakta ve test edilmektedir.

The design of our cranes is made by our engineers who are professional in it. In a process of design drawing, necessary weight controls are estimated in a computer environment. Cranes are designed and tested according to DIN 15018 norm and H1B3 class.



Vinçlerimizin çelik konstrüksiyonunda; uluslar arası kuruluşlarca akredite edilmiş laboratuvarlarda gerekli testleri yapılmış olan yüksek mukavemetli çelik saclar kullanılmaktadır.

In our cranes' steel construction high resistant steel sheets, that are internationally among organizations accredited and tested in laboratories, are used.



Vinçlerin ekseni etrafında dönüşü, çift sıra ve tek sıra rulmanlı çember dişli, pinyon dişlisi, planet redüktör ve hidrolik motor ile sağlanmaktadır. Vinçlerimizin, vinç ekseni etrafında sonsuz açıda dönebilmesi standarttır.

Crane's rotation around its axis is supported by a double row and a single row slewing ring, a pinion gear, a planetary gearbox, and a hydromotor. Our cranes rotation around it's axis is infinite.



Sistemde bulunan bütün bağlantı delikleri borwerk tezgâhında işlenerek eş merkezli olmaları sağlanmaktadır. Bağlantı milleri SAE 4140 ıslah çeliği malzemeden imal edilip 50-55 HRC sertleştirilmekte ve taşlanmaktadır.

All connection holes in the crane are concentric and processed in the borwerk workbench. The connection shafts used at joint places of the crane are produced from SAE 4140 material, hardened 50-55 HRC with heat treatment and grinded.



Hidrolik sistemde kullanılan komponentler ISO 9001 belgeli firmalar tarafından imal edilmiştir.

Components used in the hydraulic system are manufactured by ISO 9001 certified companies.



Hidrolik silindirlerde kullanılan borular St 52,3 kalitesinde çelik çekme boru olup H8 kalitesinde hassas olarak honlanmaktadır. Hidrolik silindirlerde kullanılan piston kolları Ck45 malzemeden olup çapta 50 mikron sert krom ile kaplanmakta ve f7 toleransında taşlanmaktadır. Hidrolik silindirlerde kullanılan sızdırmazlık elemanları en son teknoloji ile imal edilmekte olup imalatçı firmanın ISO 9001 kalite belgesi bulunmaktadır.

Cylinder tubes are St 52,3 quality and manufactured from seamless steel drawn material, and their inner surfaces are honed at H8 tolerance. Piston rods are manufactured Ck 45 quality material, and covered with 50 micron hard chrome at the diameter, and their surface is grinded at f7 tolerance. Sealing components used in the hydraulic cylinders are manufactured by ISO 9001 certified companies, and piston seals are manufactured of compact seal; real seals of polyurethane; O' rings of hydraulic liquid, and rubber material not affected by the pressure and temperature.



Vinçlerin tüm metal aksamaları tamamen temizlendikten sonra paslanmaya karşı dayanıklı astar ile astarlanmaktadır. Bu astar üzerine atmosfer şartlarına dayanıklı boya atılmaktadır.

When all metal components of cranes are cleaned, they are given to a lining resistant to corrosion. On to this lining an atmosphere conditions resistant dye is applied.

Şirketimiz 1975 yılında Hasan KAMA ve ortakları tarafından kuruldu. Şirket hidrolik silindir, kanal kazıcı, ön yükleyici ve hidrolik yükleme boşaltma ekipmanları imalatları konusunda faaliyet gösterdi.

1982 yılında firmamızda traktör üzerine monteli ön yükleyici ve kanal kazıcı üretimine devam edildi.

1989 yılında İstanbul – Pendik – Kaynarca'ya taşınan firmamız araç üzerine monte edilen; katlanır bomlu vinç, hurda elleçleme vinçleri ve sabit hurda vinçleri üretimine başladı ve bu konuda uzmanlaştı.

2005 yılında Gebze- Kocaeli de açılan yeni üretim tesisinde, lastik tekerlekli ve paletli ekskavatör üzerine endüstriyel bom, hareketli kabin ve yükleme boşaltma ataşmanları ekleyerek müşterilerimizin hizmetine sunuldu.

Üretim konularında kendini sürekli geliştiren firmamız yatırımlarını artırarak gelişmesine devam etti. İki üretim hattını tek bir fabrikada toplamak ve müşterilerimize daha kaliteli hizmet vermek amacı ile 2007 yılında Kocaeli - Çayırova - Şekerpınar Bölgesi'nde 7.000 metrekare kapalı, toplamda 12.500 metrekare alan üzerine kurulu yeni fabrika yatırımı yapıldı.

Firmamız; 15 ton - 90 ton arası çalışma ağırlığı ve 9 m - 20 m arası bom uzunluğu sahip sabit ve paletli hurda elleçleme vinçleri, 21 ton/metre kapasiteden – 45 ton/metre kapasiteye kadar araç üstü hurda elleçleme vinçleri ve 6 ton / metre kapasiteden 225 ton / metre kapasiteye kadar kamyon üzeri katlanır bomlu vinçler ürün çeşitliliği ile müşterilerin ihtiyaçlarına cevap vermektedir.

Firmamız araştırma-geliştirme çalışmalarını artırarak Türkiye'de bir ilk olan bina yıkım makinasını üreterek hizmete sunmuştur. Günümüzde işletme maliyetlerinin yüksek olmasından dolayı, siz değerli müşterilerimize Türkiye Bilimsel ve Teknolojik Araştırma Kurumu Tübitak tarafından da desteklenen elektrik motorlu Elleçleme Makinalarını sunduk. Sizlerden gelen olumlu tepkiler üzerine üretimine hız vererek 40 yıllık tecrübemizi bilimsel mühendislik hesaplarıyla birleştirerek, yeni teknolojik ürünler kullanarak ve 100'ü aşkın eğitimli personelimize yeni nesil kaliteli ürünlerimizi ortaya çıkarmayı başardık.

Referanslarımız arasında; Milli Savunma Bakanlığı, Kıyı Emniyetleri Genel Müdürlüğü, Köy Hizmetleri, Toprak Mahsulleri Ofisi, İzmir Tersanesi, Karayolları Genel Müdürlüğü, Karabük Demir Çelik San. A.Ş, Bursa Çimento, Akçansa Çimento, Bursa Entegre, Era Çevre, Chimirec Avrasya, Aslan Çimento, İlçe Emniyetleri ve Belediyeler de dahil olmak üzere birçok resmi ve özel kurum ve kuruluşlar bulunmaktadır.

Firmamız yeni yönetim tekniklerinin uygulanması açısından doğal ortama sahiptir. Firmamız, tam zamanında üretim, toplam kalite yönetimi ve toplam üretken bakım felsefelerini benimsemiştir.

Iso 9001:2015 Kalite Yönetim Sistemi uygulanmakta olan firmamızda tasarım, AR-GE, üretim ve servis bölümlerimizde kalitemizden taviz vermeden çalışmalarımız başarı ile sürdürülmektedir.

Firmamızın kalite tanımı, ürün ve serviste hizmetin müşterinin istediği düzeyde karşılanmasıdır.



Our company was founded by Hasan KAMA and his partners in 1975. The company operated by producing hydraulic cylinders, trenchers, front loaders, and hydraulic loading equipments. In 1982, the company continued its activity by mounting front loaders and trenchers onto tractors.

In 1989, our company moved to Istanbul-Pendik-Kaynarca and it started on a production of truck mounted; folding boom cranes, scrap handling cranes and stationary scrap handling cranes and specialized itself in its production. In 2005, our company started to gave its service to customers by producing industrial booms onto wheel and crawler excavators, mobile operator cabins, loading and unloading attachments in its new Gebze-Kocaeli factory.

Our company, which steadily had been advancing its production, continued its expansion by investing in itself. In 2007 our company gathered two lines of production in one factory with a 7000 m2 closed area of a total 12500 m2 in Kocaeli-Çayırova-Şekerpınar region in order to give a better quality service to its customers.

Our company; It can meet the needs of the customers with its product range from 15 ton to 90 ton working and 9m to 20m boom length capacities as a stationary and movable by crawler scrap handling cranes, from 21 ton/meter to 45 ton/meter capacities as a truck mounted scrap handling cranes and from 6 ton/meter to 225ton/meter capacities as a truck mounted knuckle boom cranes.

Our company by enhancing its research and development produced a high reach demolition machine being first in Turkey.

Because of high operating expenses we produced handling machines powered by electric motor which is also supported by Tubitak, The Scientific and Technological Research Council of Turkey for our customers. By receiving positive feedbacks for our products from our customers, we increased our production capacity and succeeded in the production of new high quality products by combining our 40-year-experience with scientific engineering calculations and with a more than 100 trained and professional employees.

In our lists of references: The Ministry of National Defense, The General Directorate of Coastal Police, The Rural Services, Land Crops Offices, The Izmir Shipyard, The General Directorate of Highways, Karabük Iron Steel. Bursa Cement, Akçansa Cement, Bursa Intagrated, Era Environment, Chimirec Avrasya, Aslan Cement, District police departments and Municipalities, and other public and private institutions and organizations.

Our firm has all possibilities in the application of new management techniques. Its philosophy is on-time production, quality management, and total productive maintenance. Our firm, which practices Iso 9001:2015 Quality Management System, continues its success by enhancing design, production and quality and increasing research and development. Our firm's product quality should meet a customer's satisfaction with a product and its maintenance services.




KM 209


Malzeme Taşıma Makinesi
Material Handling Machine


 300 Bar
Working Pressure
Çalışma Basıncı


 55 kW
Electric motor
Elektrik motoru


 2x120 L/dak
Pump Capacity
Pompa kapasitesi


 16 t - 20 t
Weight
Ağırlık


 2,8 t
Lift capacity at 9 m reach
9 m mesafedeki kaldırma kapasitesi


 350 L- 450 L
Attachment recommended
Tavsiye edilen ataşman


 320 L
Hydraulic tank
Hidrolik tank

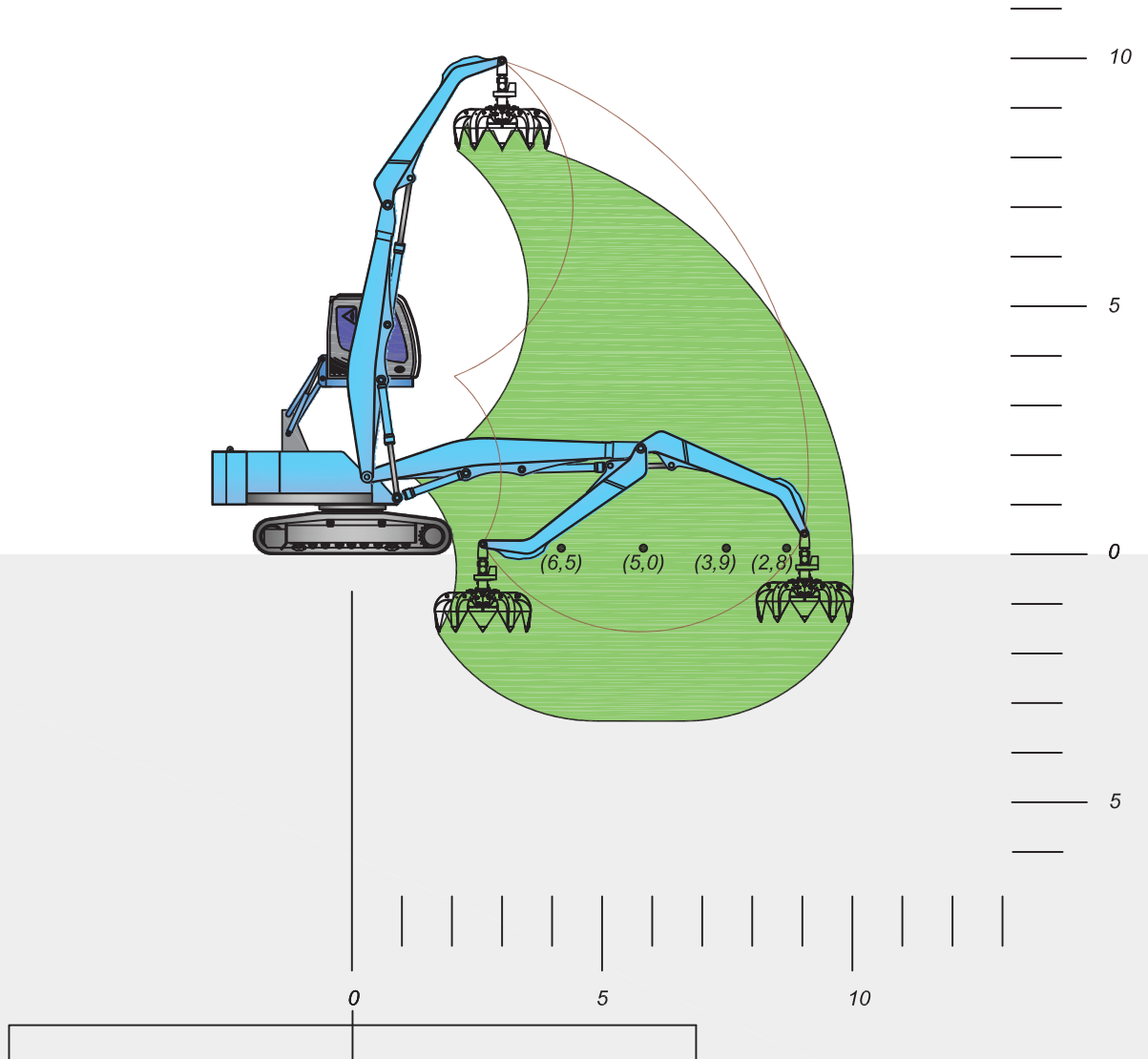
 360° Sürekli - Continuous
Rotation angle
Dönüş açısı

 2,5 m
Tail radius
Dönüş yarıçapı

 2,50 m
Upper carriage width
Şase genişliği

 0 - 8 rpm
Swing speed
Dönüş hızı

 4,80 m
Göz seviyesi
Eye level



Crawler
Palet



Mobil
Lastik Tekerlekli



max
3 m

Foundation
Yükseltme Borusu



KM 209 - 250 L hurda polibi - İstanbul
KM 209 - 250 L polyp grab - İstanbul




209 - 250 L hurda polibi - İstanbul
209 - 250 L polyp grab - İstanbul




KM 210

Malzeme Taşıma Makinesi
Material Handling Machine


 300 Bar
Working Pressure
Çalışma Basıncı


 55 kW
Electric motor
Elektrik motoru


 2x120 L/dak
Pump Capacity
Pompa kapasitesi


 16 t - 24 t
Weight
Ağırlık


 2,8 t
Lift capacity at 10 m reach
10 m mesafedeki kaldırma kapasitesi


 450 L - 600 L
Attachment recommended
Tavsiye edilen ataşman

 320 L
Hydraulic tank
Hidrolik tank

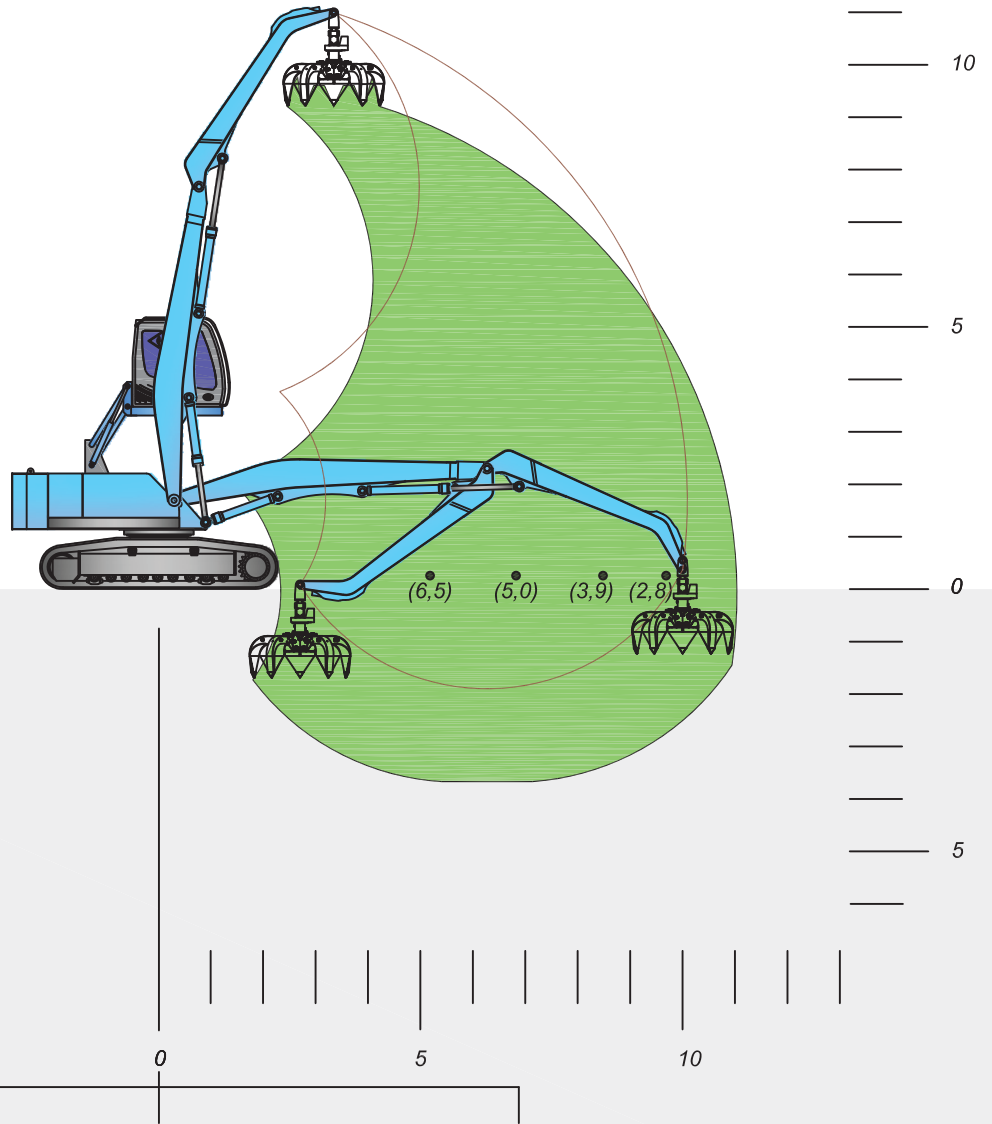
 360 ° Sürekli - Continuous
Rotation angle
Dönüş açısı

 2,5 m
Tail radius
Dönüş yarıçapı

 2,70 m
Upper carriage width
Şase genişliği

 0 - 8 rpm
Swing speed
Dönüş hızı

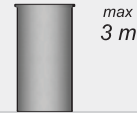
 4,90 m
Göz seviyesi
Eye level



Crawler
Palet



Mobil
Lastik Tekerlekli



Foundation
Yükseltme Borusu

max
3 m



KM 210 - 600 L hurda polibi - Kocaeli
KM 210 - 600 L polyp grab - Kocaeli




KM 210 - 350 L hurda polibi - İstanbul
KM 210 - 350 L polyp grab - İstanbul




KM 210 - 1000 L Kapma Kepçe - Kocaeli
KM 210 - 1000 L Clamshell grab - Kocaeli

KM 211


Malzeme Taşıma Makinesi
Material Handling Machine


 300 Bar
Working Pressure
Çalışma Basıncı


 55 kW
Electric motor
Elektrik motoru


 2x120 L/dak
Pump Capacity
Pompa kapasitesi


 17 t - 25 t
Weight
Ağırlık


 2,5 t
Lift capacity at 11 m reach
11 m mesafedeki kaldırma kapasitesi


 450 L - 600 L
Attachment recommended
Tavsiye edilen ataşman


 320 L
Hydraulic tank
Hidrolik tank

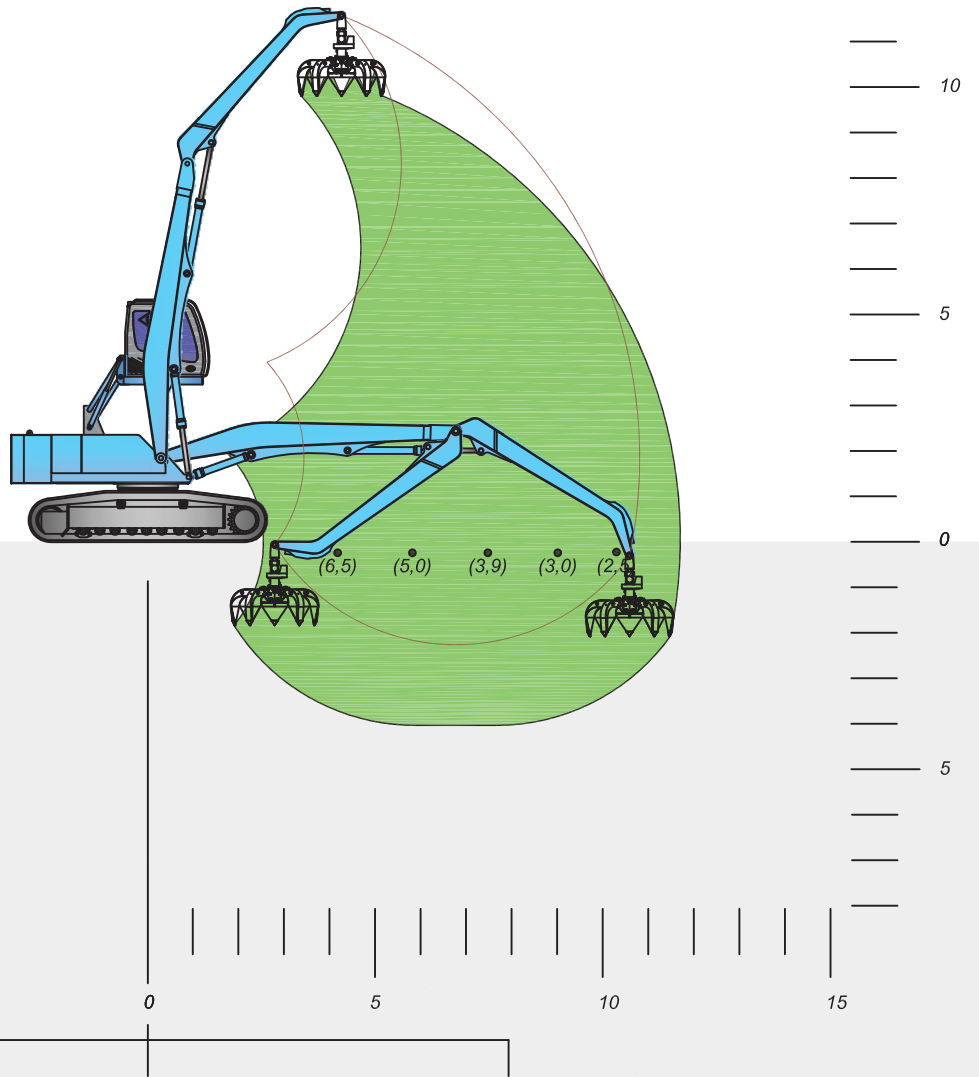
 360° Sürekli - Continuous
Rotation angle
Dönüş açısı

 3,00 m
Tail radius
Dönüş yarıçapı

 2,70 m
Upper carriage width
Şase genişliği

 0 - 8 rpm
Swing speed
Dönüş hızı

 5,2 m
Göz seviyesi
Eye level



Crawler
Palet



Mobil
Lastik Tekerlekli



Foundation
Yükseltme Borusu

max
3 m



KM 211 - 350 L hurda polibi - İzmir
KM 211 - 350 L polyp grab - İzmir




KM 211 - 250 L hurda polibi - İzmir
KM 211 - 250 L polyp grab - İzmir




KM 211 - 350 L hurda polibi - İzmir
KM 211 - 350 L polyp grab - İzmir

KM 212

Malzeme Taşıma Makinesi
Material Handling Machine


 300 Bar
Working Pressure
Çalışma Basıncı


 55 kW
Electric motor
Elektrik motoru


 2x120 L/dak
Pump Capacity
Pompa kapasitesi


 17 t - 25 t
Weight
Ağırlık


 2,5 t
Lift capacity at 12 m reach
12 m mesafedeki kaldırma kapasitesi


 450 L - 600 L
Attachment recommended
Tavsiye edilen ataşman


 320 L
Hydraulic tank
Hidrolik tank

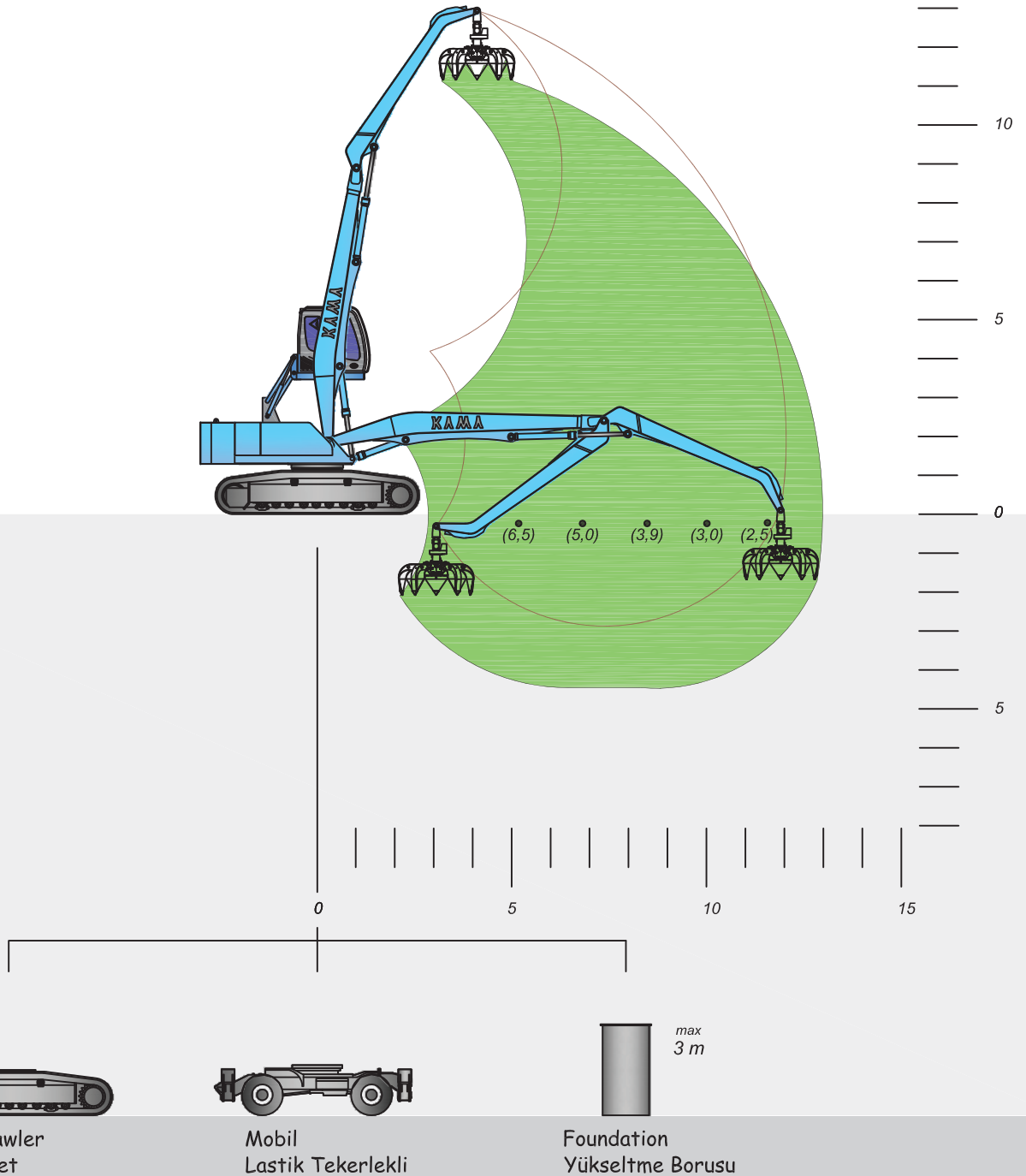
 360° Sürekli - Continuous
Rotation angle
Dönüş açısı

 3,00 m
Tail radius
Dönüş yarıçapı

 2,70 m
Upper carriage width
Şase genişliği

 0 - 8 rpm
Swing speed
Dönüş hızı

 5,2 m
Göz seviyesi
Eye level





KM 212 - 350 L hurda polibi - Tekirdağ
KM 212 - 350 L polyp grab - Tekirdağ



KM 212 - 350 L hurda polibi - Bursa
KM 212 - 350 L polyp grab - Bursa



KM 212 - 350 L hurda polibi - İstanbul
KM 212 - 350 L polyp grab - İstanbul



KM 212 - 600 L hurda polibi - Cezayir
KM 212 - 600 L polyp grab - Algeria




KM 212 - 350 L hurda polibi - Bursa
KM 212 - 350 L polyp grab - Bursa




KM 311 - 600 L hurda polibi - Kocaeli
KM 311 - 600 L polyp grab - Kocaeli

KM 213

Malzeme Taşıma Makinesi
Material Handling Machine


 300 Bar
Working Pressure
Çalışma Basıncı


 55 kW
Electric motor
Elektrik motoru


 2x120 L/dak
Pump Capacity
Pompa kapasitesi


 18 t - 26 t
Weight
Ağırlık


 2,2 t
Lift capacity at 13 m reach
13 m mesafedeki kaldırma kapasitesi


 350 L - 450 L
Attachment recommended
Tavsiye edilen ataşman

 320 L
Hydraulic tank
Hidrolik tank

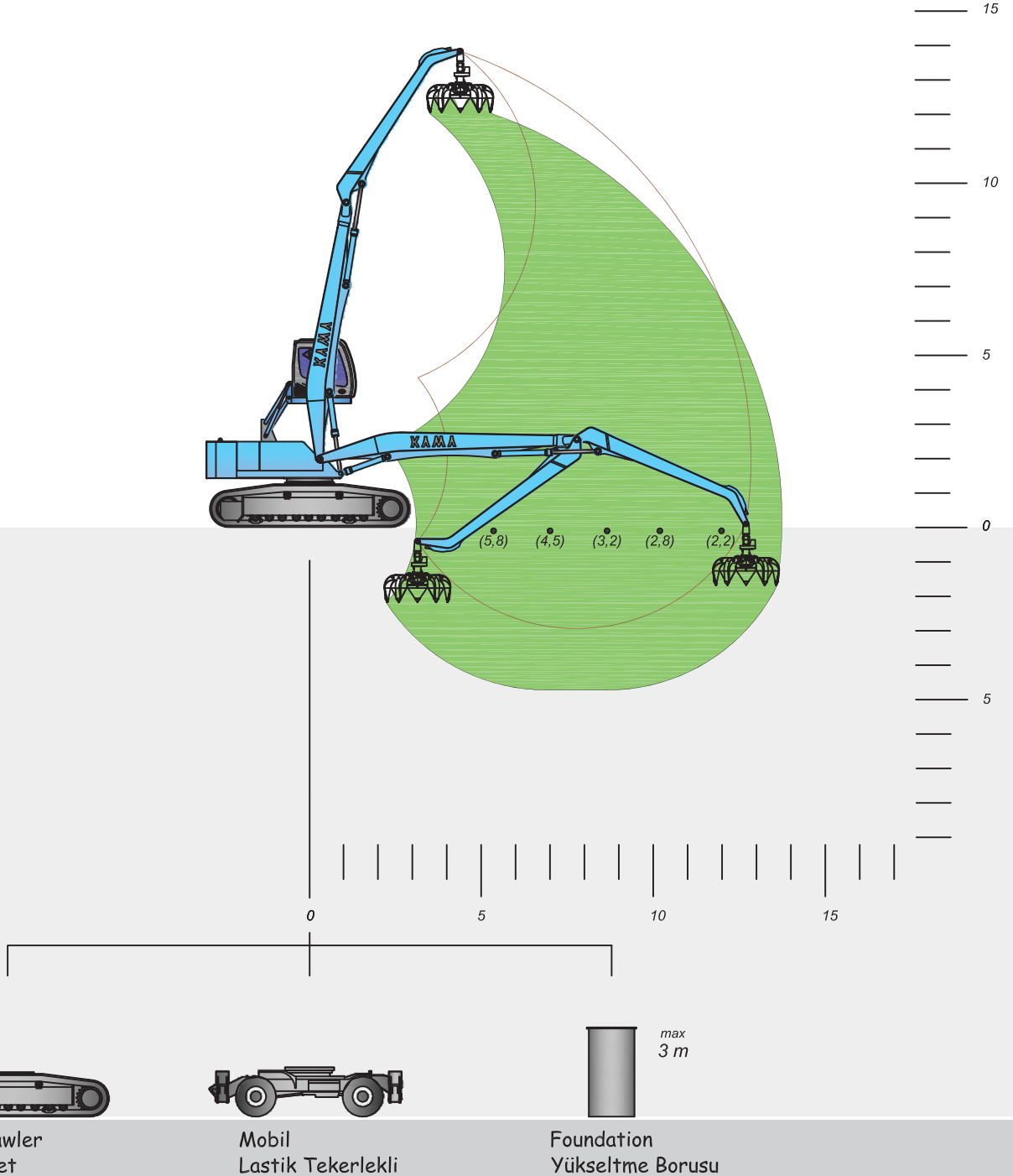
 360 ° Sürekli - Continuous
Rotation angle
Dönüş açısı

 3,00 m
Tail radius
Dönüş yarıçapı

 2,70 m
Upper carriage width
Şase genişliği

 0 - 8 rpm
Swing speed
Dönüş hızı

 5,2 m
Göz seviyesi
Eye level





KM 213 - 350 L hurda polibi - Zonguldak
 KM 213 - 350 L polyp grab - Zonguldak



KM 213 - 350 L hurda polibi - Zonguldak
 KM 213 - 350 L polyp grab - Zonguldak



KM 213 - 350 L hurda polibi - Zonguldak
 KM 213 - 350 L polyp grab - Zonguldak

KM 310

Malzeme Taşıma Makinesi
Material Handling Machine

300 Bar
Working Pressure
Çalışma Basıncı

75 kW
Electric motor
Elektrik motoru

2x160 L/dak
Pump Capacity
Pompa kapasitesi

20 t - 29 t
Weight
Ağırlık

3,50 t
Lift capacity at 10 m reach
10 m mesafedeki kaldırma kapasitesi

450L - 600 L
Attachment recommended
Tavsiye edilen ataşman

350 L
Hydraulic tank
Hidrolik tank

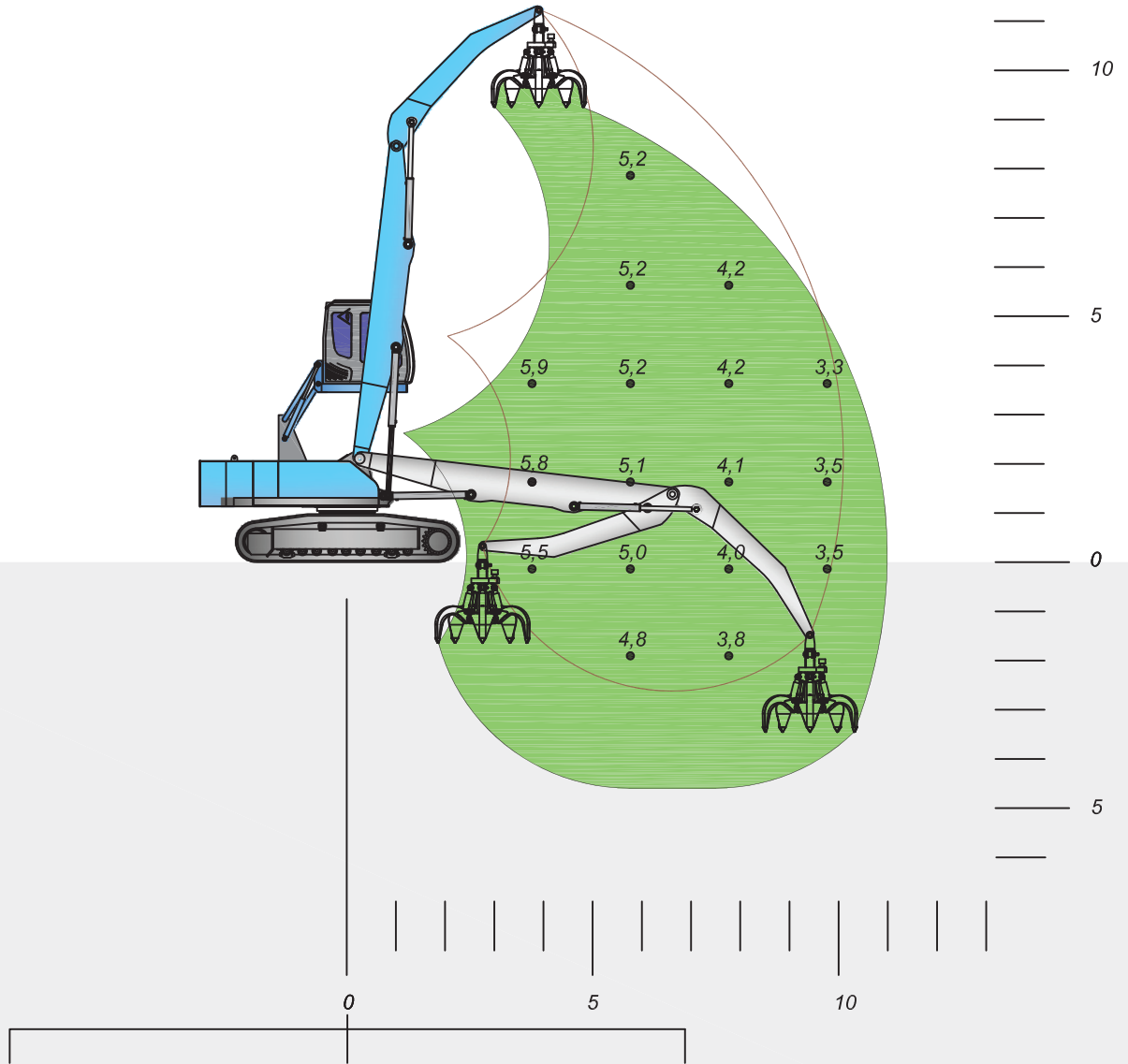
360° Sürekli - Continuous
Rotation angle
Dönüş açısı

3,3 m
Tail radius
Dönüş yarıçapı

2,80 m
Upper carriage width
Şase genişliği

0 - 8 rpm
Swing speed
Dönüş hızı

5,20 m
Göz seviyesi
Eye level



Crawler
Palet



Mobil
Lastik Tekerlekli



Foundation
Yükseltme Borusu



KM 310 - 350 L hurda polibi - Zonguldak
KM 310 - 350 L polyp grab - Zonguldak



KM 310 - 350 L hurda polibi - Adapazarı
KM 310 - 350 L polyp grab - Adapazarı

KM 312

Malzeme Taşıma Makinesi
Material Handling Machine

300 Bar
Working Pressure
Çalışma Basıncı

75 kW
Electric motor
Elektrik motoru

2x160 L/dak
Pump Capacity
Pompa kapasitesi

22 t - 33 t
Weight
Ağırlık

3,3 t
Lift capacity at 12 m reach
12 m mesafedeki kaldırma kapasitesi

450 L - 600 L
Attachment recommended
Tavsiye edilen ataşman

350 L
Hydraulic tank
Hidrolik tank

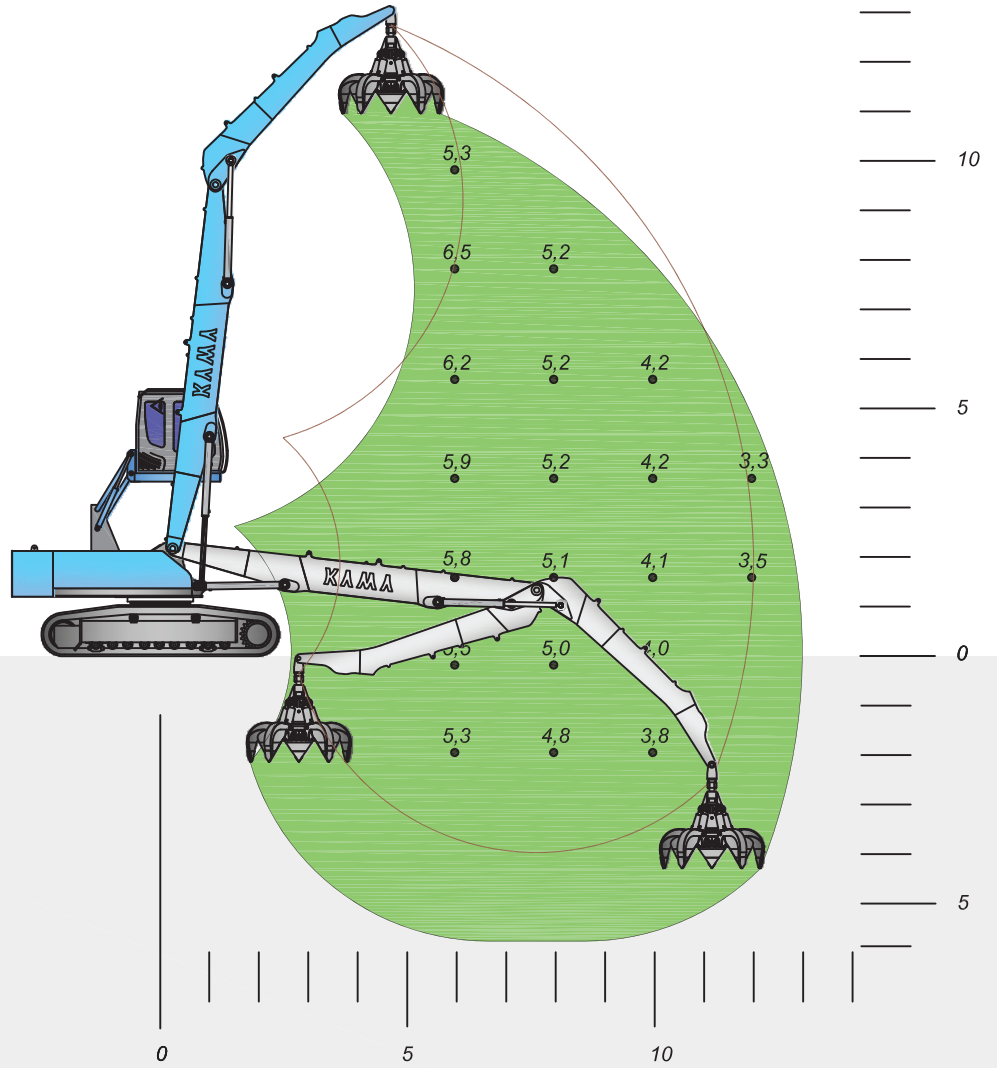
360° Sürekli - Continuous
Rotation angle
Dönüş açısı

3,3 m
Tail radius
Dönüş yarıçapı

2,80 m
Upper carriage width
Şase genişliği

0 - 8 rpm
Swing speed
Dönüş hızı

5,3 m
Göz seviyesi
Eye level



Crawler
Palet



Mobil
Lastik Tekerlekli



Foundation
Yükseltme Borusu



KM 312 - 350 L hurda polibi - Bursa
KM 312 - 350 L polyp grab - Bursa




KM 312 - 450 L hurda polibi - İskenderun
KM 312 - 450 L polyp grab - İskenderun

KM 414

Malzeme Taşıma Makinesi
Material Handling Machine


 300 Bar
Working Pressure
Çalışma Basıncı


 110 kW
Electric motor
Elektrik motoru


 2x200 L/dak
Pump Capacity
Pompa kapasitesi


 23 t - 43 t
Weight
Ağırlık


 3,5 t
Lift capacity at 14 m reach
14 m mesafedeki kaldırma kapasitesi


 450 L - 600 L
Attachment recommended
Tavsiye edilen ataşman

 350 L
Hydraulic tank
Hidrolik tank

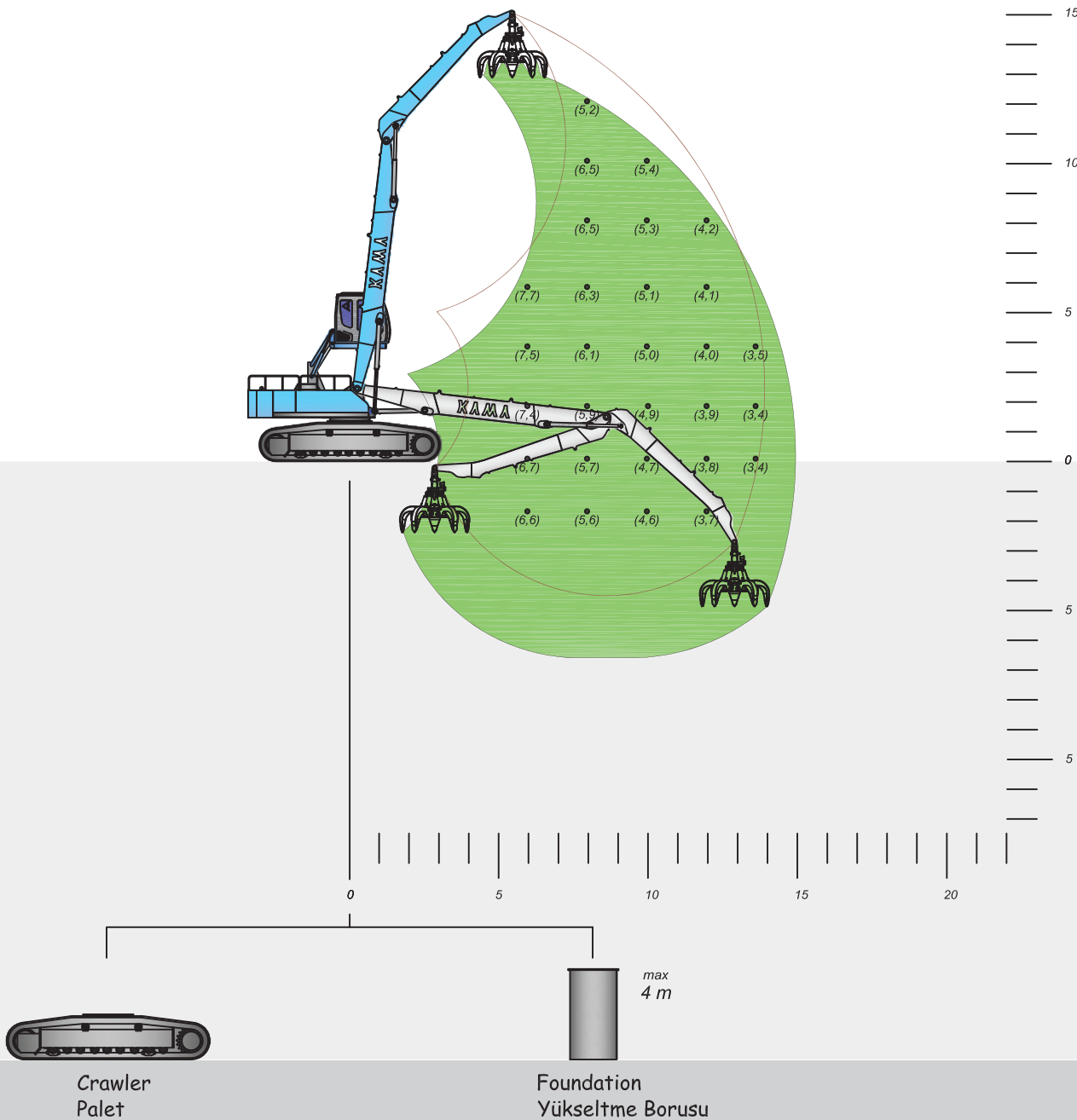
 360° Sürekli - Continuous
Rotation angle
Dönüş açısı

 3,30 m
Tail radius
Dönüş yarıçapı

 2,80 m
Upper carriage width
Şase genişliği

 0 - 8 rpm
Swing speed
Dönüş hızı

 5,3 m
Göz seviyesi
Eye level





KM 414 - 600 L hurda polibi - İzmir
KM 414 - 600 L polyp grab - İzmir



KM 414 - 450 L hurda polibi - Mersin
KM 414 - 450 L polyp grab - Mersin



KM 414 - 600 L hurda polibi - Suudi Arabistan
KM 414 - 600 L polyp grab - Saudi Arabia



KM 414 - 450 L hurda polibi - Konya
KM 414 - 450 L polyp grab - Konya




KM 414 - 450 L hurda polibi - Filistin
KM 414 - 450 L polyp grab - Palestine




KM 414 - 600 L hurda polibi - Abu Dabi
KM 414 - 600 L polyp grab - Abu Dhabi

KM 416

Malzeme Taşıma Makinesi
Material Handling Machine


 300 Bar
Working Pressure
Çalışma Basıncı


 132 kW
Electric motor
Elektrik motoru


 2x260 L/dak
Pump Capacity
Pompa kapasitesi


 30 t - 60 t
Weight
Ağırlık


 3,5 t
Lift capacity at 16 m reach
16 m mesafedeki kaldırma kapasitesi


 600 L - 900 L
Attachment recommended
Tavsiye edilen ataşman


 500 L
Hydraulic tank
Hidrolik tank

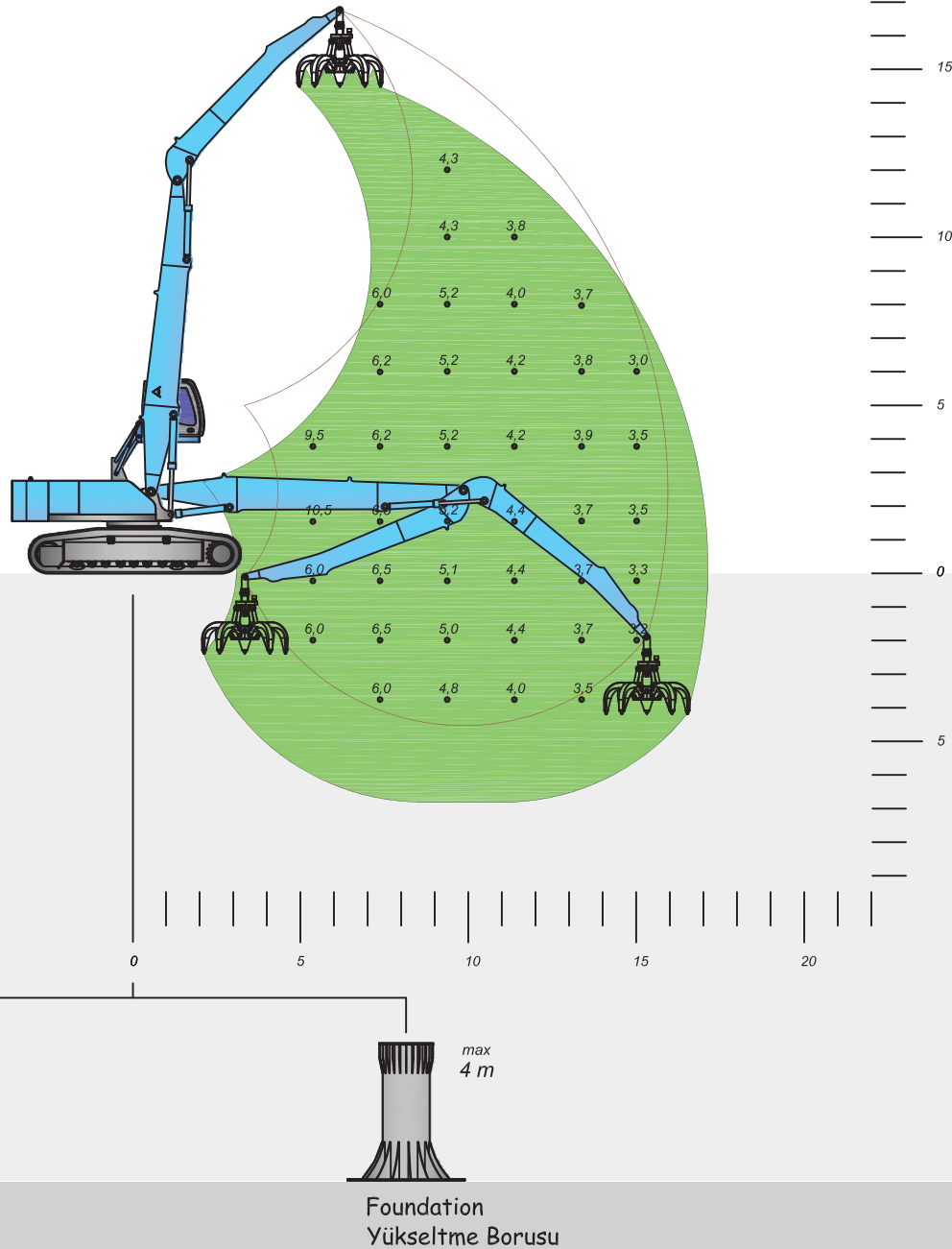
 360 ° Sürekli - Continuous
Rotation angle
Dönüş açısı

 3,6 m
Tail radius
Dönüş yarıçapı

 3 m
Upper carriage width
Şase genişliği

 0 - 8 rpm
Swing speed
Dönüş hızı

 5,4 m
Göz seviyesi
Eye level





KM 416 - 600 L hurda polibi - İskenderun
KM 416 - 600 L polyp grab - İskenderun



KM 416 - 600 L hurda polibi - Umman
KM 416 - 600 L polyp grab - Oman



KM 416 - 450 L hurda polibi - Konya
KM 416 - 450 L polyp grab - Konya





KM 416 - 350 L hurda polibi - İskenderun
KM 416 - 350 L polyp grab - İskenderun



KM 416 - 600 L hurda polibi - İskenderun
KM 416 - 600 L polyp grab - İskenderun




KM 416 - 600 L hurda polibi - İskenderun
KM 416 - 600 L polyp grab - İskenderun

KM 417

Malzeme Taşıma Makinesi
Material Handling Machine


 300 Bar
Working Pressure
Çalışma Basıncı


 132 kW
Electric motor
Elektrik motoru


 2x260 L/dak
Pump Capacity
Pompa kapasitesi


 32 t - 62 t
Weight
Ağırlık


 3,7 t
Lift capacity at 17 m reach
17 m mesafedeki kaldırma kapasitesi


 600 L - 900 L
Attachment recommended
Tavsiye edilen ataşman


 500 L
Hydraulic tank
Hidrolik tank

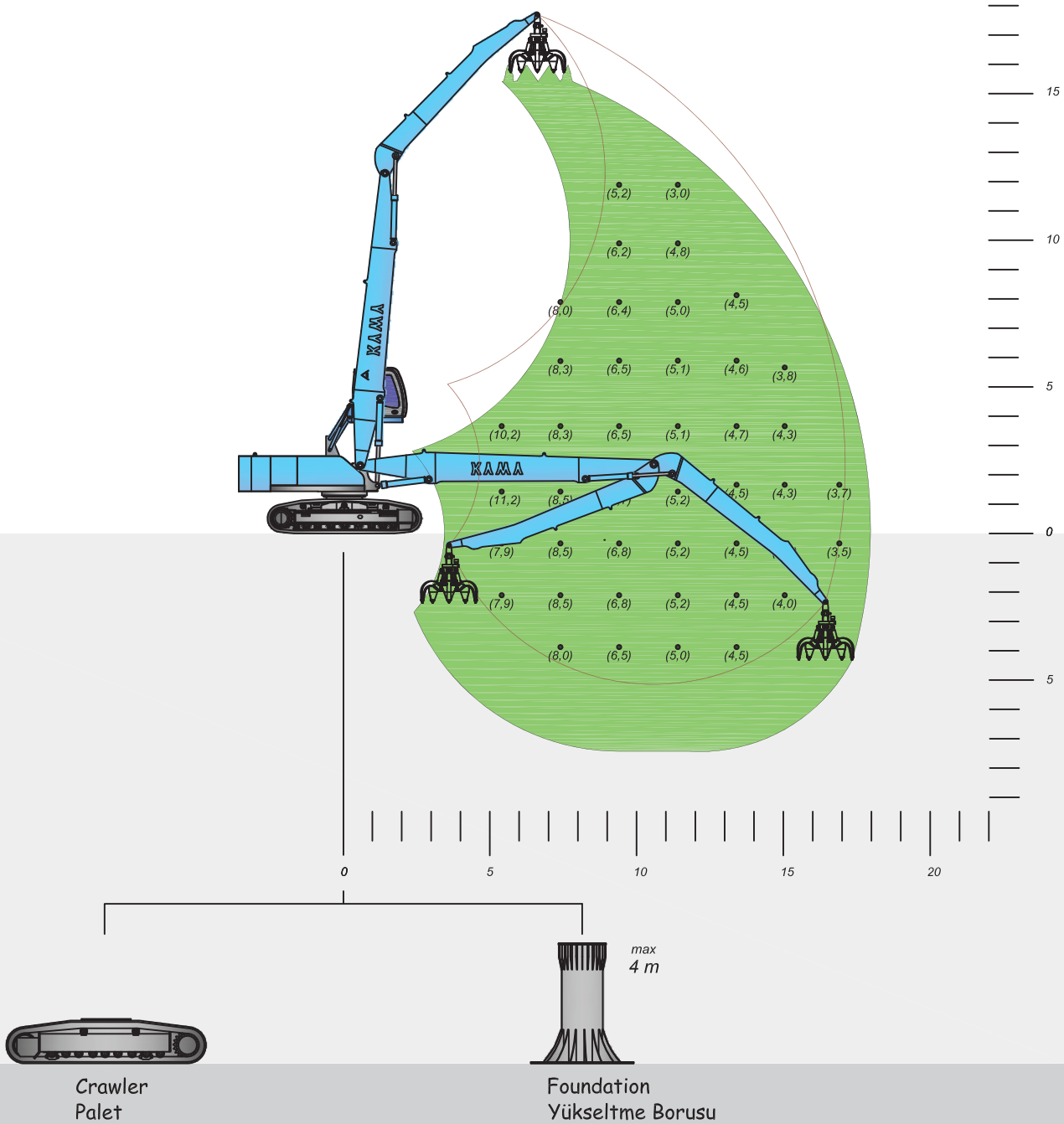
 360 ° Sürekli - Continuous
Rotation angle
Dönüş açısı

 3,6 m
Tail radius
Dönüş yarıçapı

 3 m
Upper carriage width
Şase genişliği

 0 - 8 rpm
Swing speed
Dönüş hızı

 5,4 m
Göz seviyesi
Eye level






KM 417 - 600 L hurda polibi - Ürdün
KM 417 - 600 L polyp grab - Jordan




KM 417 - 600 L hurda polibi - Osmaniye
KM 417 - 600 L polyp grab - Osmaniye

KM 418


Malzeme Taşıma Makinesi
Material Handling Machine


 300 Bar
Working Pressure
Çalışma Basıncı


 160 kW
Electric motor
Elektrik motoru


 2x300 L/dak
Pump Capacity
Pompa kapasitesi


 38 t - 72 t
Weight
Ağırlık


 4,2 t
Lift capacity at 18 m reach
18 m mesafedeki kaldırma kapasitesi


 600 L - 900 L
Attachment recommended
Tavsiye edilen ataşman


 700 L
Hydraulic tank
Hidrolik tank

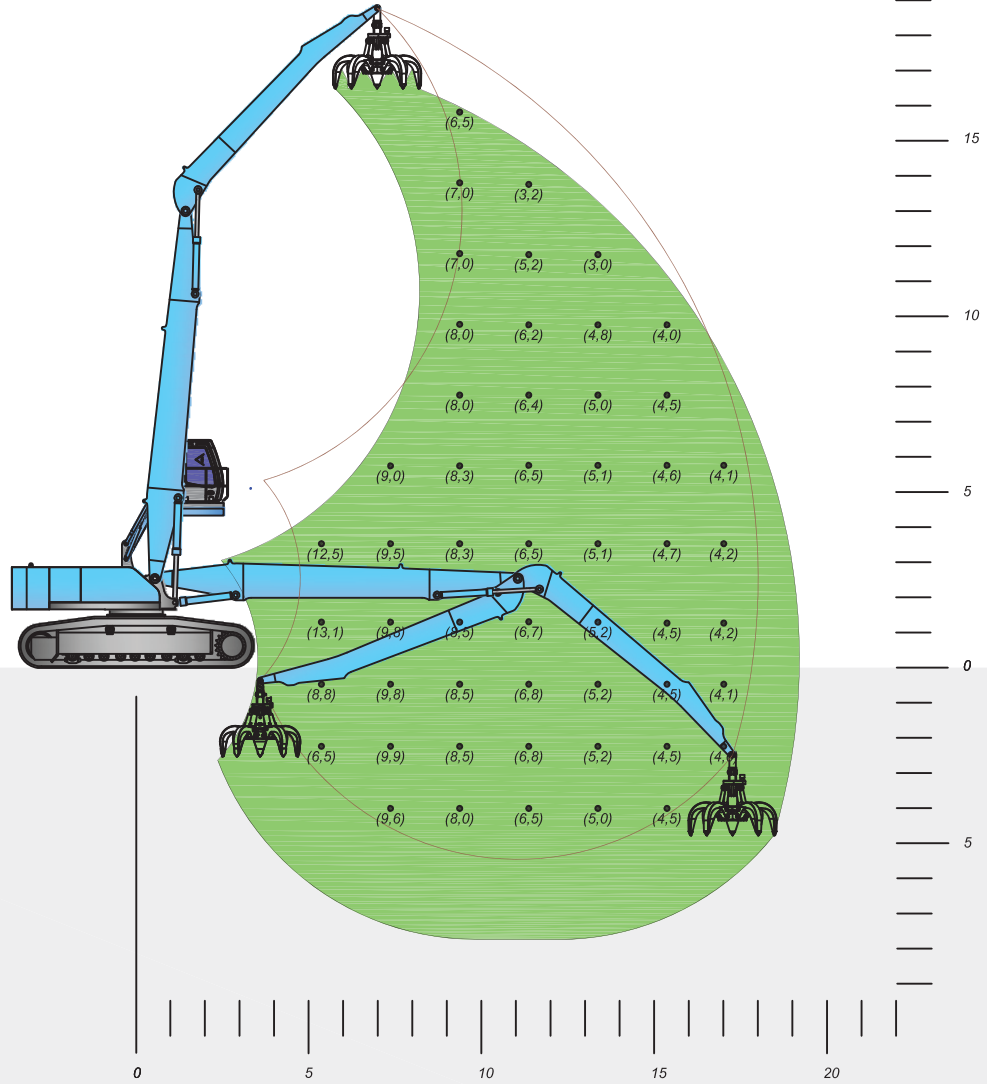
 360 ° Sürekli - Continuous
Rotation angle
Dönüş açısı

 3,8 m
Tail radius
Dönüş yarıçapı

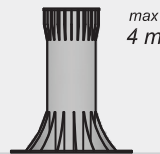
 3 m
Upper carriage width
Şase genişliği

 0 - 8 rpm
Swing speed
Dönüş hızı

 5,5 m
Göz seviyesi
Eye level



Crawler
Palet



Foundation
Yükseltme Borusu



KM 418 - 900 L hurda polibi - İskenderun
KM 418 - 900 L polyp grab - İskenderun




KM 418 - 1200 L hurda polibi - Somali
KM 418 - 1200 L polyp grab - Somali

KM 520

Malzeme Taşıma Makinesi
Material Handling Machine


 300 Bar
Working Pressure
Çalışma Basıncı


 185 kW
Electric motor
Elektrik motoru


 2x300 L/dak
Pump Capacity
Pompa kapasitesi


 55 t - 80 t
Weight
Ağırlık


 3,6 t
Lift capacity at 20 m reach
20 m mesafedeki kaldırma kapasitesi


 1200 L
Attachment recommended
Tavsiye edilen ataşman

 700 L
Hydraulic tank
Hidrolik tank

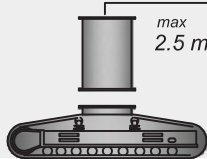
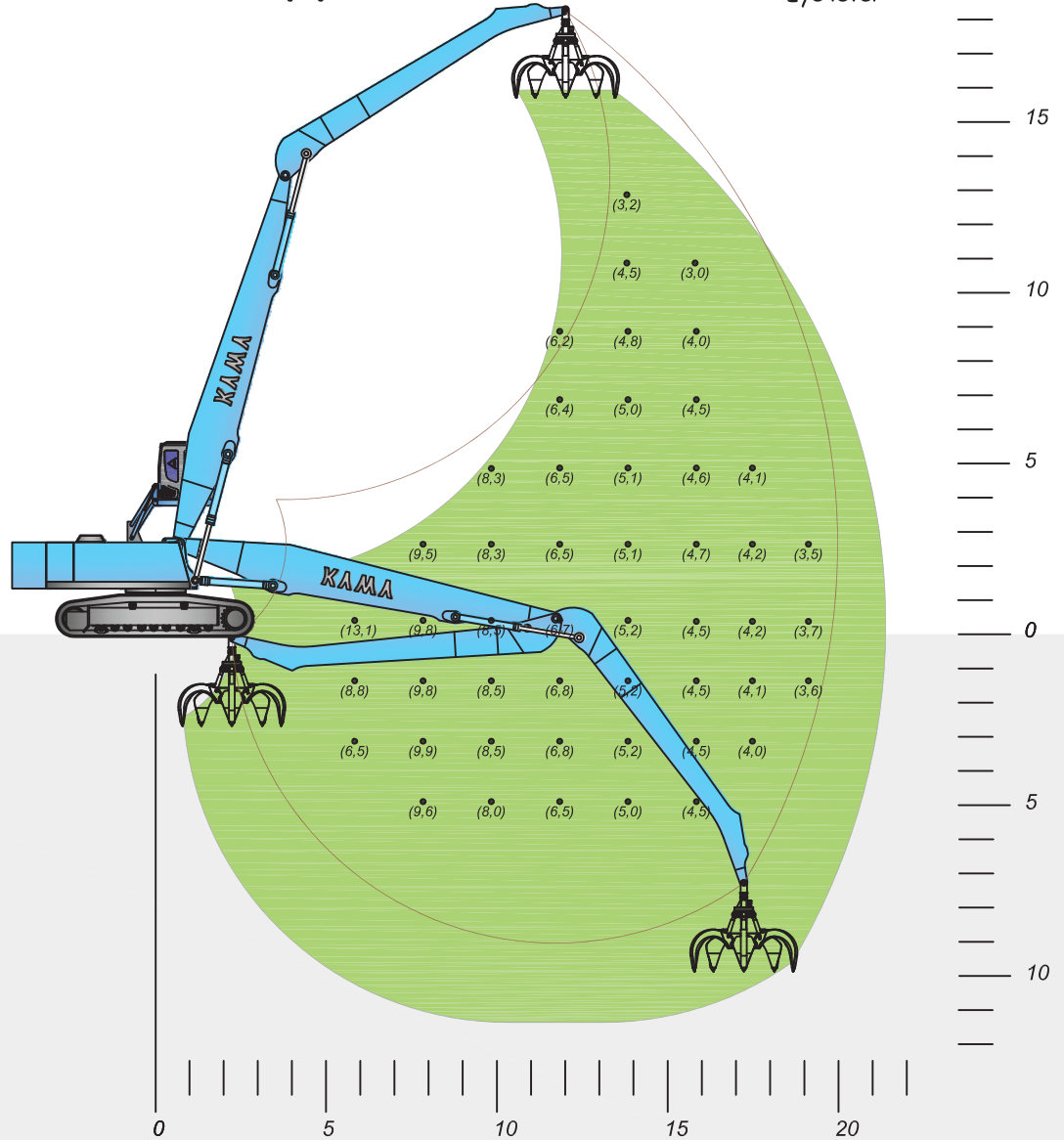
 360° Sürekli - Continuous
Rotation angle
Dönüş açısı

 4,1 m
Tail radius
Dönüş yarıçapı

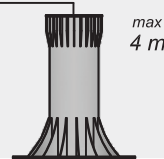
 3,25 m
Upper carriage width
Şase genişliği

 0 - 6 rpm
Swing speed
Dönüş hızı

 5 m
Göz seviyesi
Eye level



Crawler
Palet



Foundation
Yükseltme Borusu




KM 520 - 2500 L Kapma Kepçe - Kıbrıs
KM 520 - 2500 L Clamshell grab - Cyprus





KM 520 - 2500 L Kapma Kepçe - Kıbrıs
KM 520 - 2500 L Clamshell grab - Cyprus

KM 211

Malzeme Taşıma Makinesi
Material Handling Machine


 300 Bar
Working Pressure
Çalışma Basıncı


 100 kW / 136 HP
Engine power
Dizel motor


 2x160 L/dak
Pump Capacity
Pompa kapasitesi


 19 t - 20 t
Weight
Ağırlık


 250 L
Fuel tank
Yakıt tankı


 3,4 t
Lift capacity at 11 m reach
11 m mesafedeki kaldırma kapasitesi


 350 L
Attachment recommended
Tavsiye edilen ataşman

 350 L
Hydraulic tank
Hidrolik tank

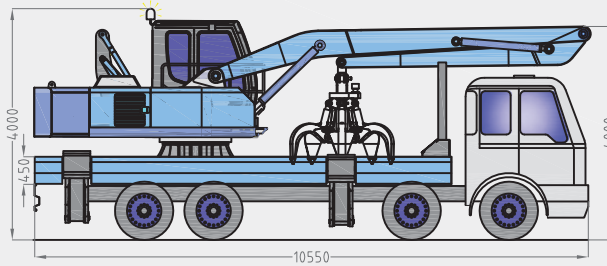
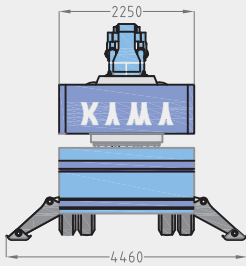
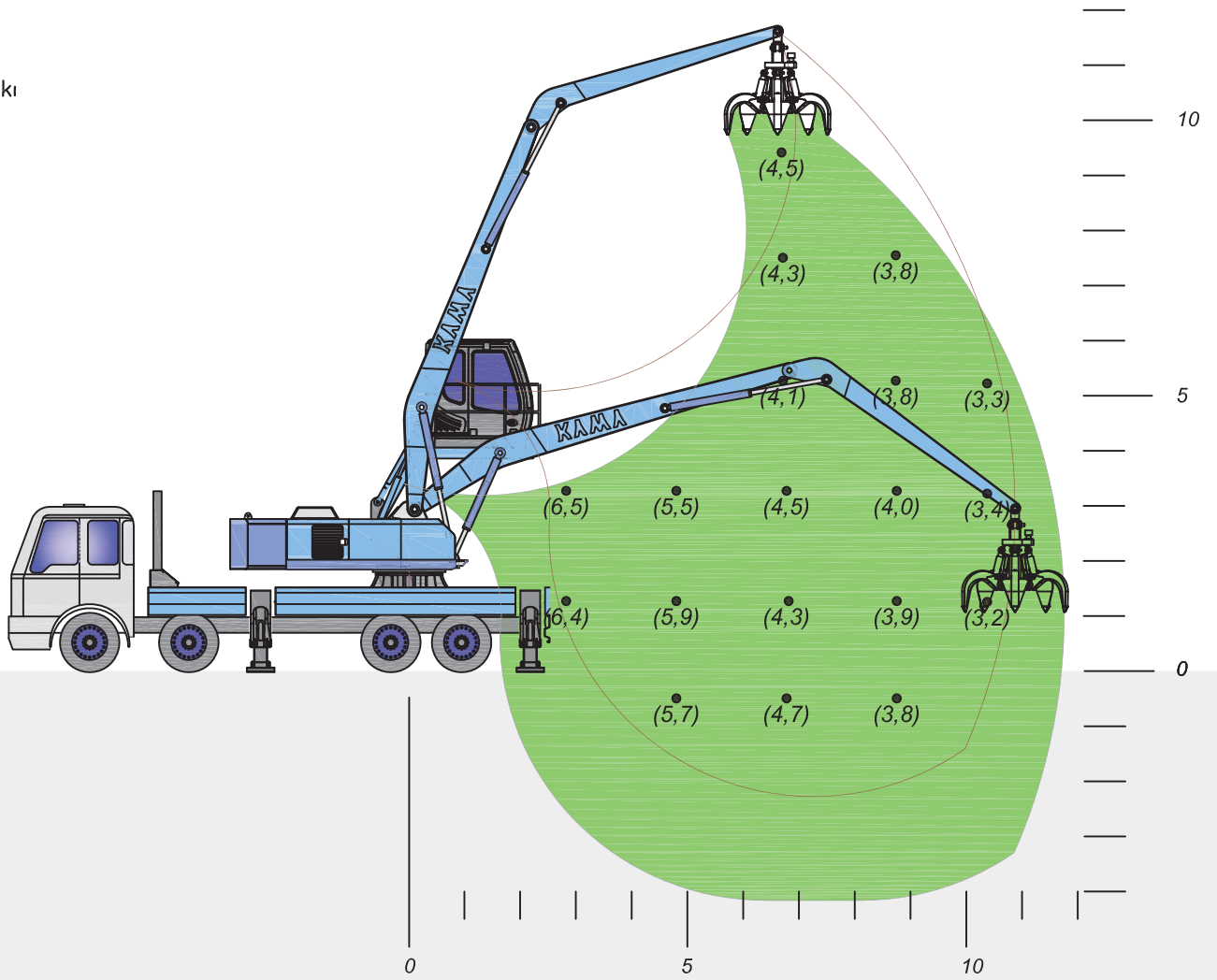
 360° Sürekli - Continuous
Rotation angle
Dönüş açısı

 3,1 m
Tail radius
Dönüş yarıçapı

 2,5 m
Upper carriage width
Şase genişliği

 0 - 8 rpm
Swing speed
Dönüş hızı

 5,3 m
Göz seviyesi
Eye level





KM 211 - 350 L hurda polibi - İstanbul
KM 211 - 350 L polyp grab - İstanbul



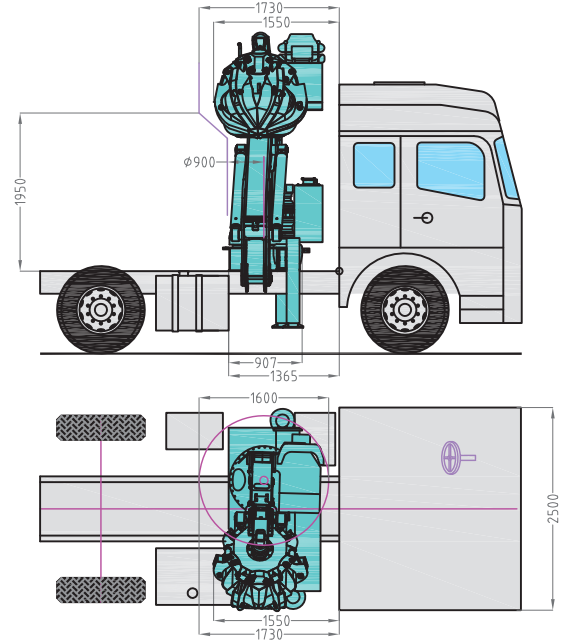
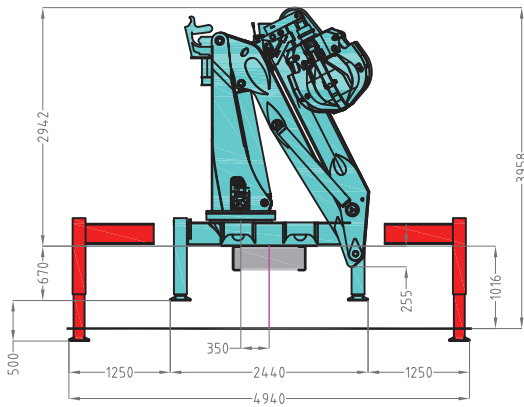
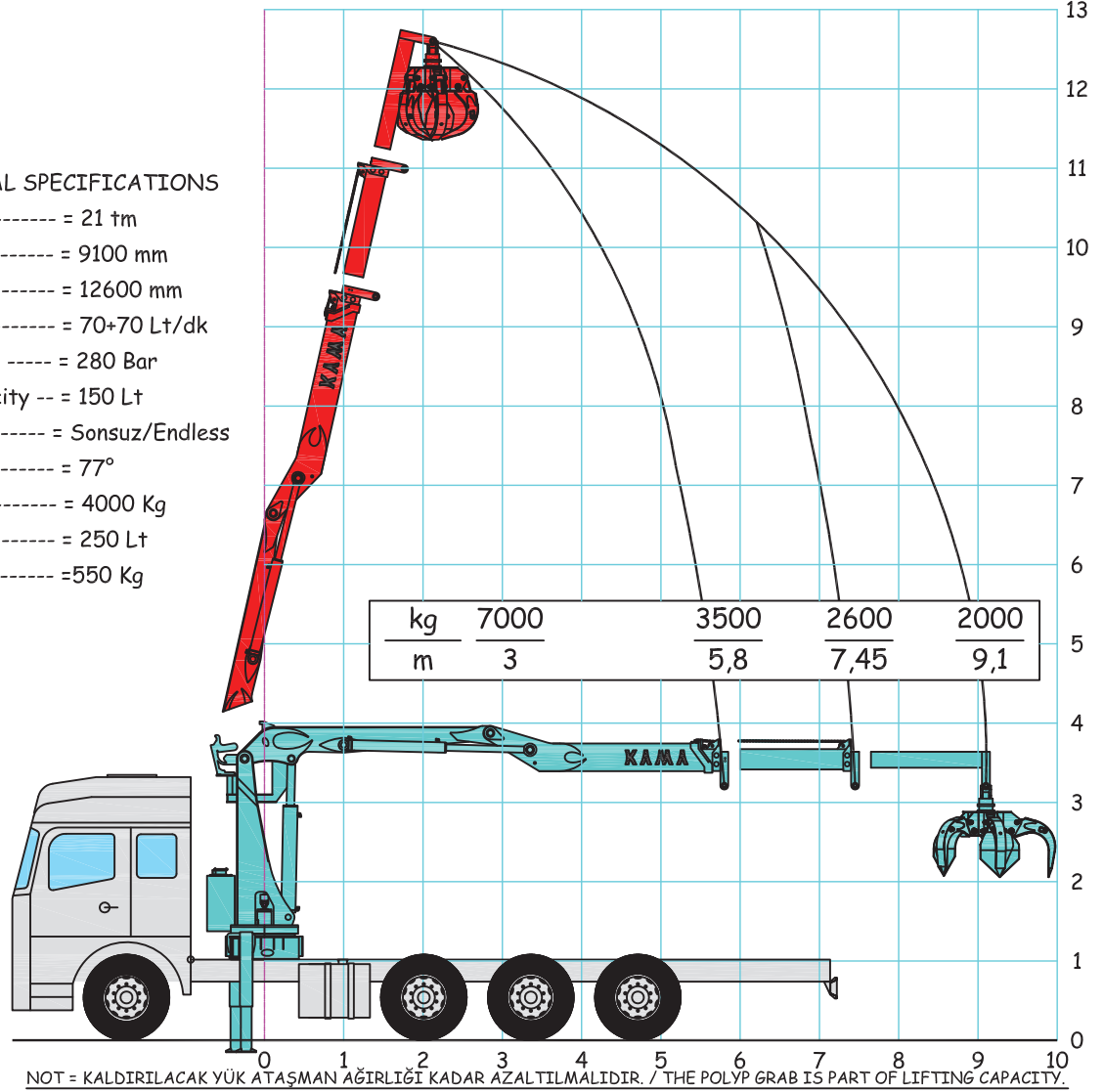
KM 211 - 350 L hurda polibi - Kıbrıs
KM 211 - 350 L polyp grab - Kıbrıs

KM 210 HS2-9

Malzeme Taşıma Makinesi
Material Handling Machine

TEKNİK ÖZELLİKLERİ / TECHNICAL SPECIFICATIONS

- Kaldırma Momenti / Lifting moment ----- = 21 tm
 Yatay Uzama / Horizontal extension ----- = 9100 mm
 Dikey Uzama / Vertical extension ----- = 12600 mm
 Pompa Kapasitesi / Pump capacity ----- = 70+70 Lt/dk
 Çalışma Basıncı / Operating pressure ----- = 280 Bar
 Yağ Tankı Kapasitesi / Oil tank capacity -- = 150 Lt
 Dönüş Açısı / Slewing angle ----- = Sonsuz/Endless
 Dikilme Açısı / Vertical angle ----- = 77°
 Vinç Ağırlığı / Crane weight ----- = 4000 Kg
 Polip Kapasitesi / Polyp capacity ----- = 250 Lt
 Polip Ağırlığı / Polyp weight ----- = 550 Kg





KM 210-HS2-9 - 250 Lt hurda polibi - Zonguldak
KM 210-HS2-9 - 250 Lt polyp grab - Zonguldak



KM 210-HS2-9 - 250 Lt hurda polibi - İzmir
KM 210-HS2-9 - 250 Lt polyp grab - İzmir



KM 210-HS2-9 - 250 Lt hurda polibi - Zonguldak
KM 210-HS2-9 - 250 Lt polyp grab - Zonguldak



KM 210-HS2-9 - 250 Lt hurda polibi - Ankara
KM 210-HS2-9 - 250 Lt polyp grab - Ankara



40 KM 210-HS2-9 - 250 Lt hurda polibi - Sakarya
KM 210-HS2-9 - 250 Lt polyp grab - Sakarya



KM 210-HS2-9 - 250 Lt hurda polibi
KM 210-HS2-9 - 250 Lt polyp grab



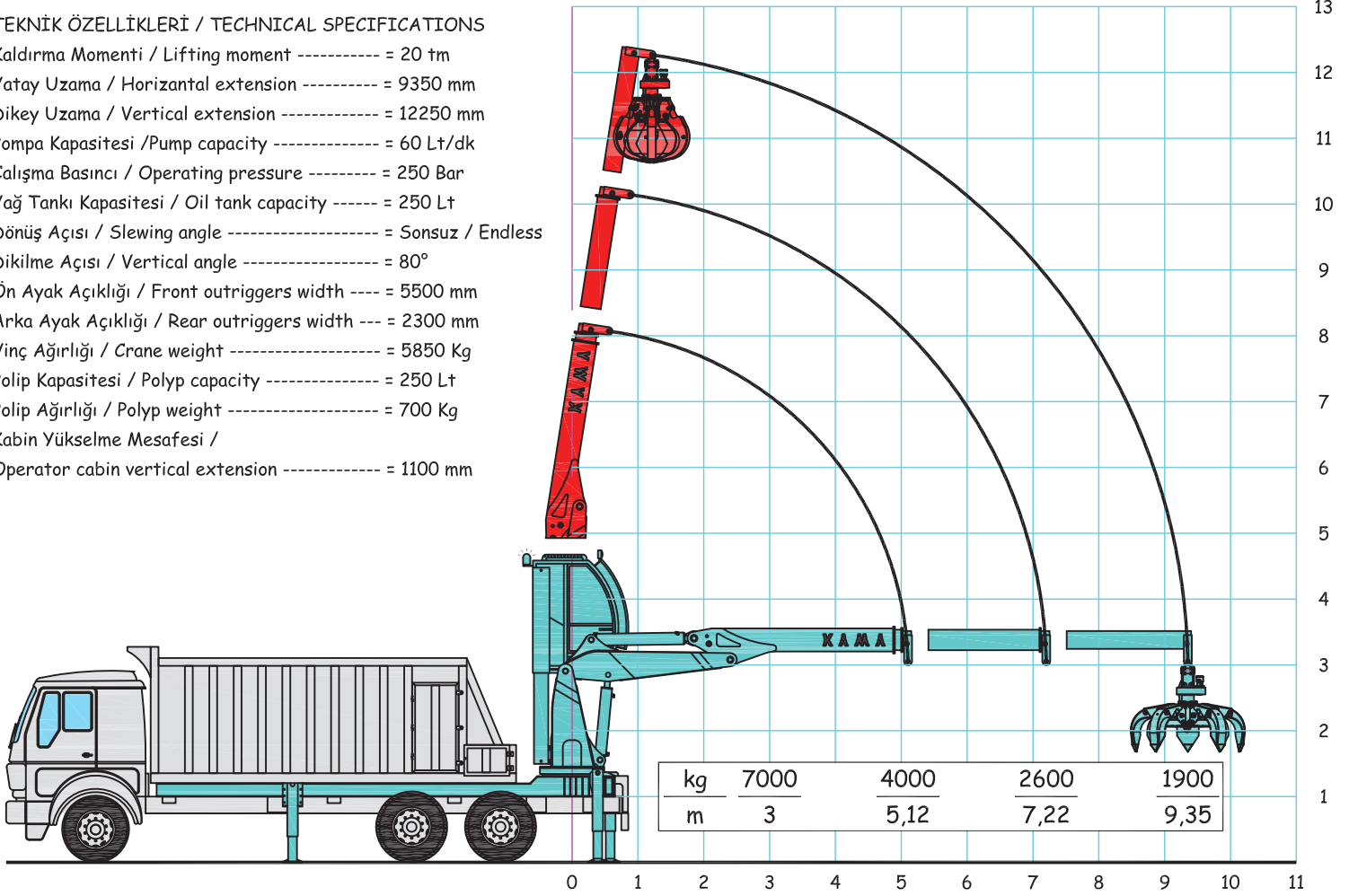
KM 210-HS2-9 - 250 Lt hurda polibi - Çanakkale
KM 210-HS2-9 - 250 Lt polyp grab - Çanakkale

KM 200 L1 HU-2

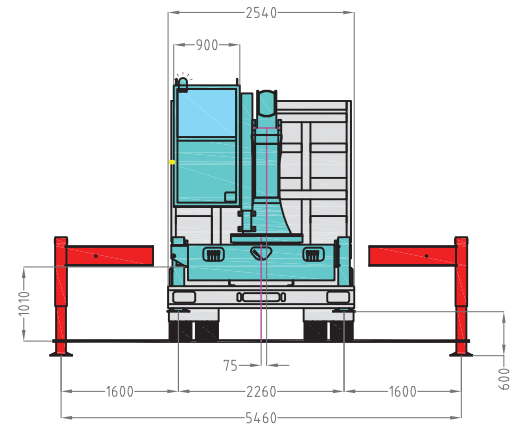
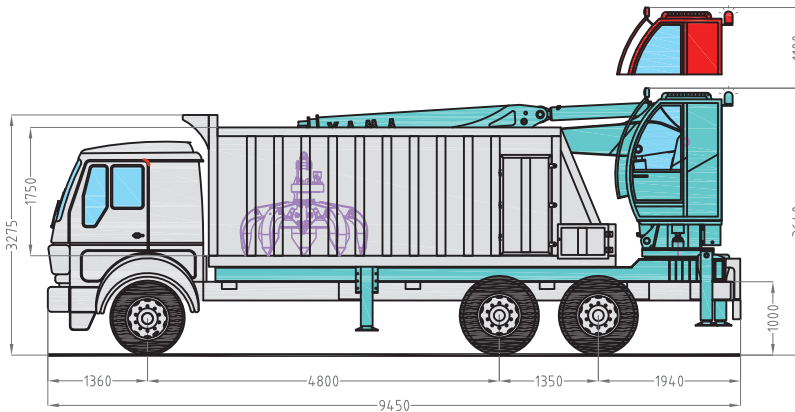
Malzeme Taşıma Makinesi
Material Handling Machine

TEKNİK ÖZELLİKLERİ / TECHNICAL SPECIFICATIONS

Kaldırma Momenti / Lifting moment	= 20 tm
Yatay Uzama / Horizontal extension	= 9350 mm
Dikey Uzama / Vertical extension	= 12250 mm
Pompa Kapasitesi / Pump capacity	= 60 Lt/dk
Çalışma Basıncı / Operating pressure	= 250 Bar
Yağ Tankı Kapasitesi / Oil tank capacity	= 250 Lt
Dönüş Açısı / Slewing angle	= Sonsuz / Endless
Dikilme Açısı / Vertical angle	= 80°
Ön Ayak Açıklığı / Front outriggers width	= 5500 mm
Arka Ayak Açıklığı / Rear outriggers width	= 2300 mm
Vinç Ağırlığı / Crane weight	= 5850 Kg
Polip Kapasitesi / Polyp capacity	= 250 Lt
Polip Ağırlığı / Polyp weight	= 700 Kg
Kabin Yükselme Mesafesi / Operator cabin vertical extension	= 1100 mm



NOT = KALDIRILACAK YÜK ATAŞMAN AĞIRLIĞI KADAR AZALTILMALIDIR. / THE POLYP GRAB IS PART OF LIFTING CAPACITY.





KM 200-L1-HU2 - 250 Lt hurda polibi - Kocaeli
KM 200-L1-HU2 - 250 Lt polyp grab - Kocaeli



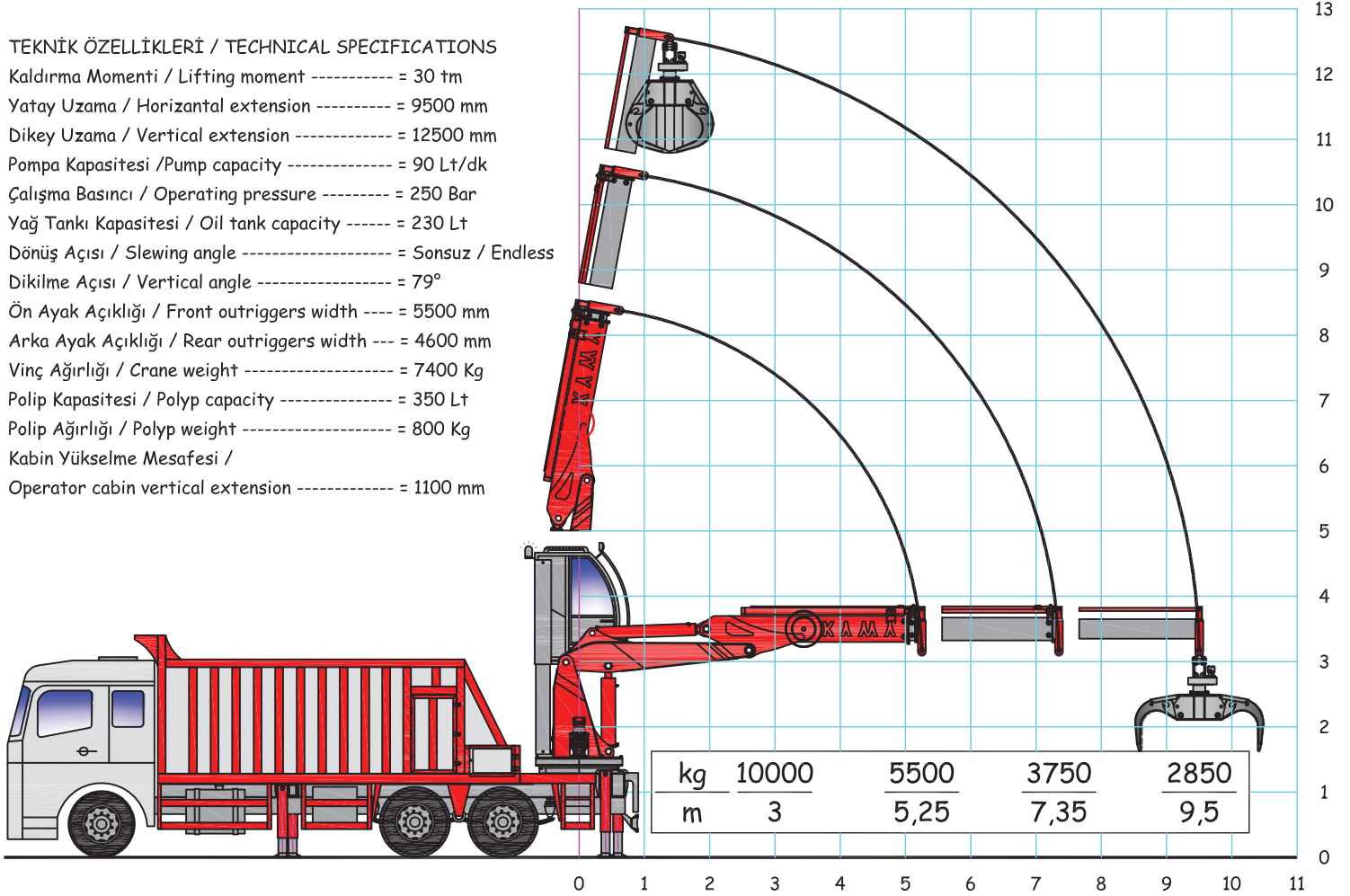
KM 200-L1-HU2 - 250 Lt hurda polibi - Kocaeli
KM 200-L1-HU2 - 250 Lt polyp grab - Kocaeli

KM 300 L1 HU-2

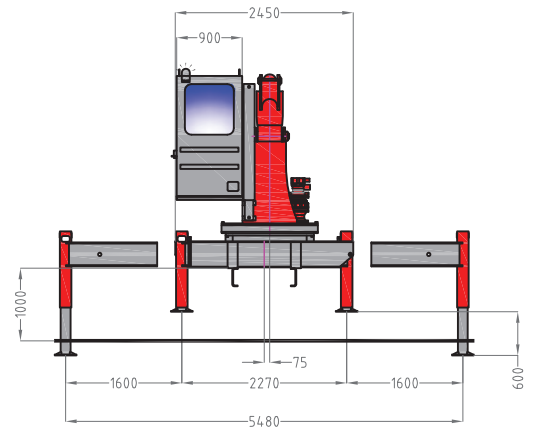
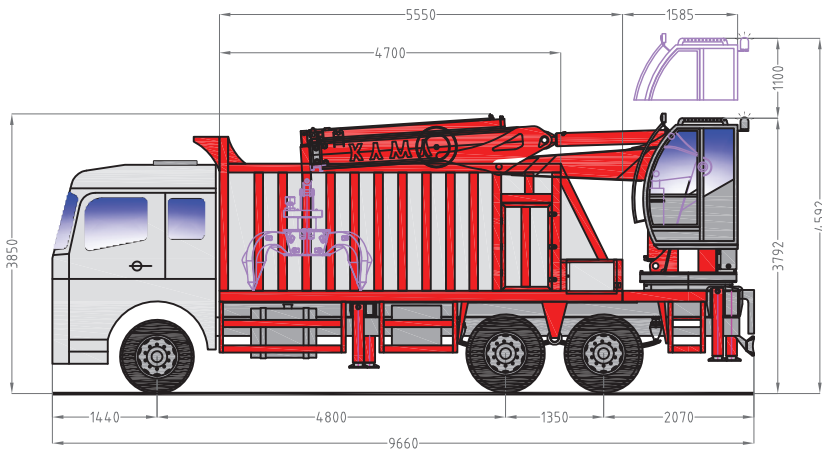
Malzeme Taşıma Makinesi
Material Handling Machine

TEKNİK ÖZELLİKLERİ / TECHNICAL SPECIFICATIONS

Kaldırma Momenti / Lifting moment	= 30 tm
Yatay Uzama / Horizontal extension	= 9500 mm
Dikey Uzama / Vertical extension	= 12500 mm
Pompa Kapasitesi / Pump capacity	= 90 Lt/dk
Çalışma Basıncı / Operating pressure	= 250 Bar
Yağ Tankı Kapasitesi / Oil tank capacity	= 230 Lt
Dönüş Açısı / Slewing angle	= Sonsuz / Endless
Dikilme Açısı / Vertical angle	= 79°
Ön Ayak Açıklığı / Front outriggers width	= 5500 mm
Arka Ayak Açıklığı / Rear outriggers width	= 4600 mm
Vinç Ağırlığı / Crane weight	= 7400 Kg
Polip Kapasitesi / Polyp capacity	= 350 Lt
Polip Ağırlığı / Polyp weight	= 800 Kg
Kabin Yükselme Mesafesi / Operator cabin vertical extension	= 1100 mm



NOT = KALDIRILACAK YÜK ATAŞMAN AĞIRLIĞI KADAR AZALTILMALIDIR. / THE POLYP GRAB IS PART OF LIFTING CAPACITY.





KM 300-L1-HU2 - 350 Lt hurda polibi - Kahramanmaraş
KM 300-L1-HU2 - 350 Lt polyp grab - Kahramanmaraş



KM 300-L1-HU2 - 350 Lt hurda polibi - Kahramanmaraş
KM 300-L1-HU2 - 350 Lt polyp grab - Kahramanmaraş



KM 300-L1-HU2 - 350 Lt hurda polibi - Kahramanmaraş
KM 300-L1-HU2 - 350 Lt polyp grab - Kahramanmaraş



46

KM 300-L1-HU2 - 350 Lt hurda polibi - İstanbul
KM 300-L1-HU2 - 350 Lt polyp grab - İstanbul



KM 300-L1-HU2 - 350 Lt hurda polibi - Azerbaijan
KM 300-L1-HU2 - 350 Lt polyp grab - Azerbaijan



KM 300-L1-HU2 - 350 Lt hurda polibi - Ankara
KM 300-L1-HU2 - 350 Lt polyp grab - Ankara



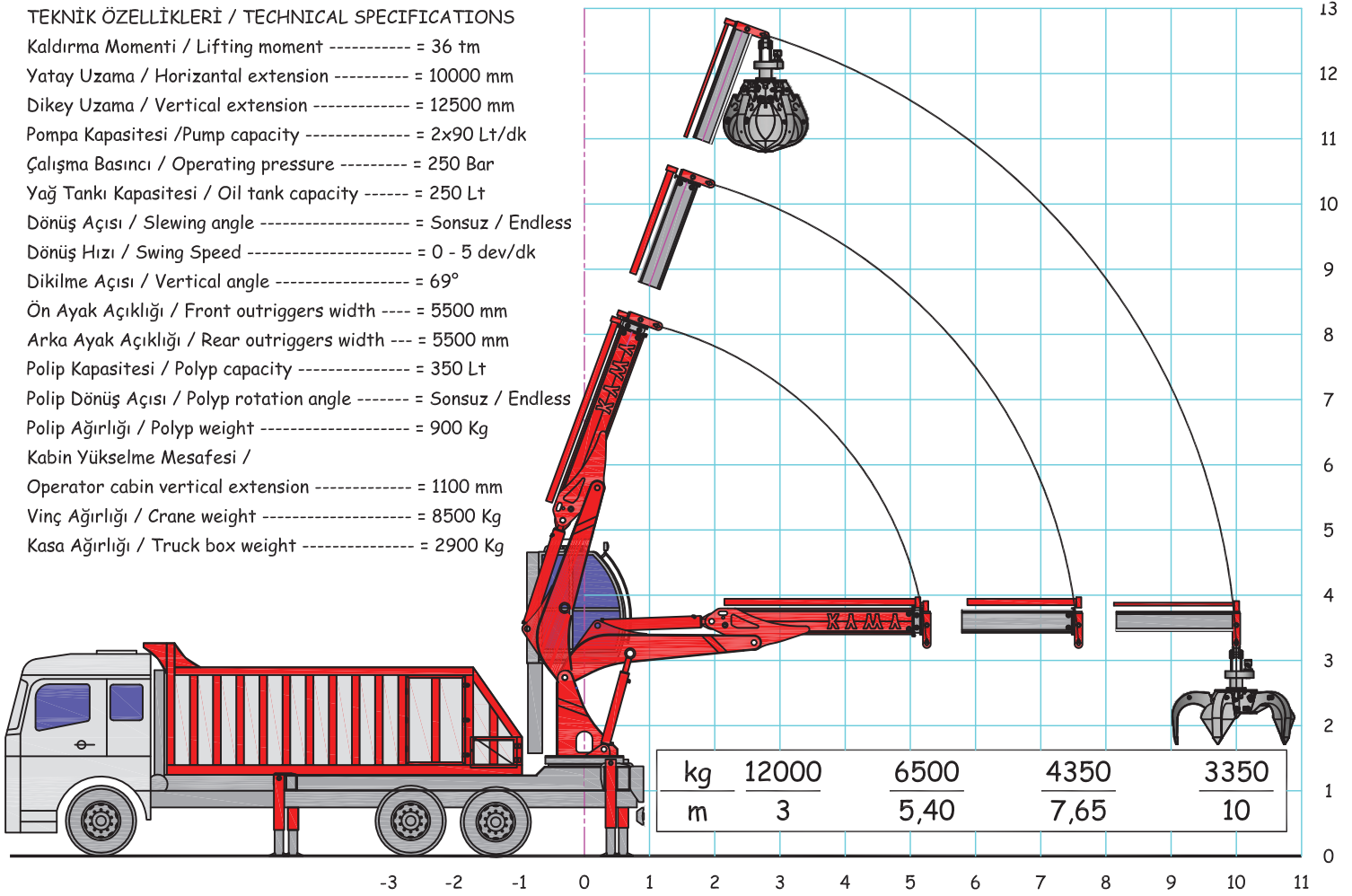
KM 300-L1-HU2 - 350 Lt hurda polibi - İstanbul
KM 300-L1-HU2 - 350 Lt polyp grab - İstanbul

KM 360 L2 HU-2

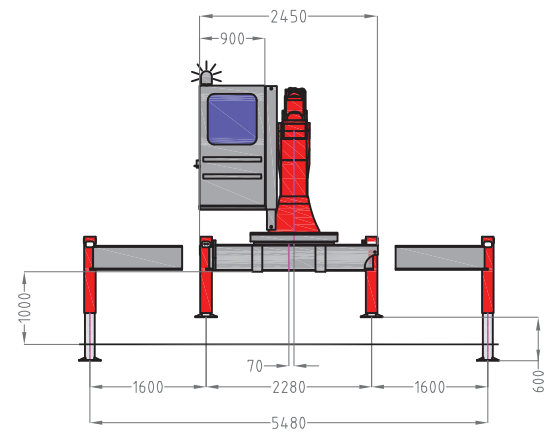
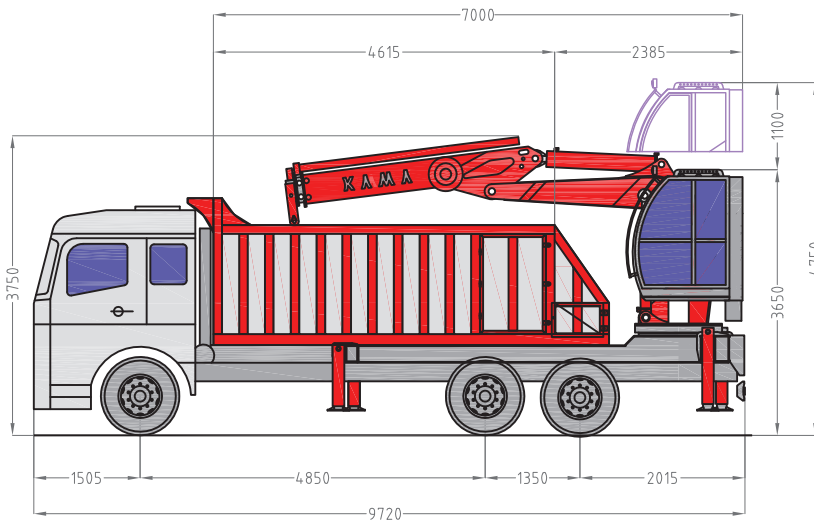
Malzeme Taşıma Makinesi
Material Handling Machine

TEKNİK ÖZELLİKLERİ / TECHNICAL SPECIFICATIONS

Kaldırma Momenti / Lifting moment	= 36 tm
Yatay Uzama / Horizontal extension	= 10000 mm
Dikey Uzama / Vertical extension	= 12500 mm
Pompa Kapasitesi / Pump capacity	= 2x90 Lt/dk
Çalışma Basıncı / Operating pressure	= 250 Bar
Yağ Tankı Kapasitesi / Oil tank capacity	= 250 Lt
Dönüş Açısı / Slewing angle	= Sonsuz / Endless
Dönüş Hızı / Swing Speed	= 0 - 5 dev/dk
Dikilme Açısı / Vertical angle	= 69°
Ön Ayak Açıklığı / Front outriggers width	= 5500 mm
Arka Ayak Açıklığı / Rear outriggers width	= 5500 mm
Polip Kapasitesi / Polyp capacity	= 350 Lt
Polip Dönüş Açısı / Polyp rotation angle	= Sonsuz / Endless
Polip Ağırlığı / Polyp weight	= 900 Kg
Kabin Yükselme Mesafesi / Operator cabin vertical extension	= 1100 mm
Vinç Ağırlığı / Crane weight	= 8500 Kg
Kasa Ağırlığı / Truck box weight	= 2900 Kg



NOT = KALDIRILACAK YÜK ATAŞMAN AĞIRLIĞI KADAR AZALTILMALIDIR. / THE POLYP GRAB IS PART OF LIFTING CAPACITY.





KM 300-L1-HU2 - 350 Lt hurda polibi - İstanbul
KM 300-L1-HU2 - 350 Lt polyp grab - İstanbul



KM 300-L1-HU2 - 350 Lt hurda polibi - İstanbul
KM 300-L1-HU2 - 350 Lt polyp grab - İstanbul



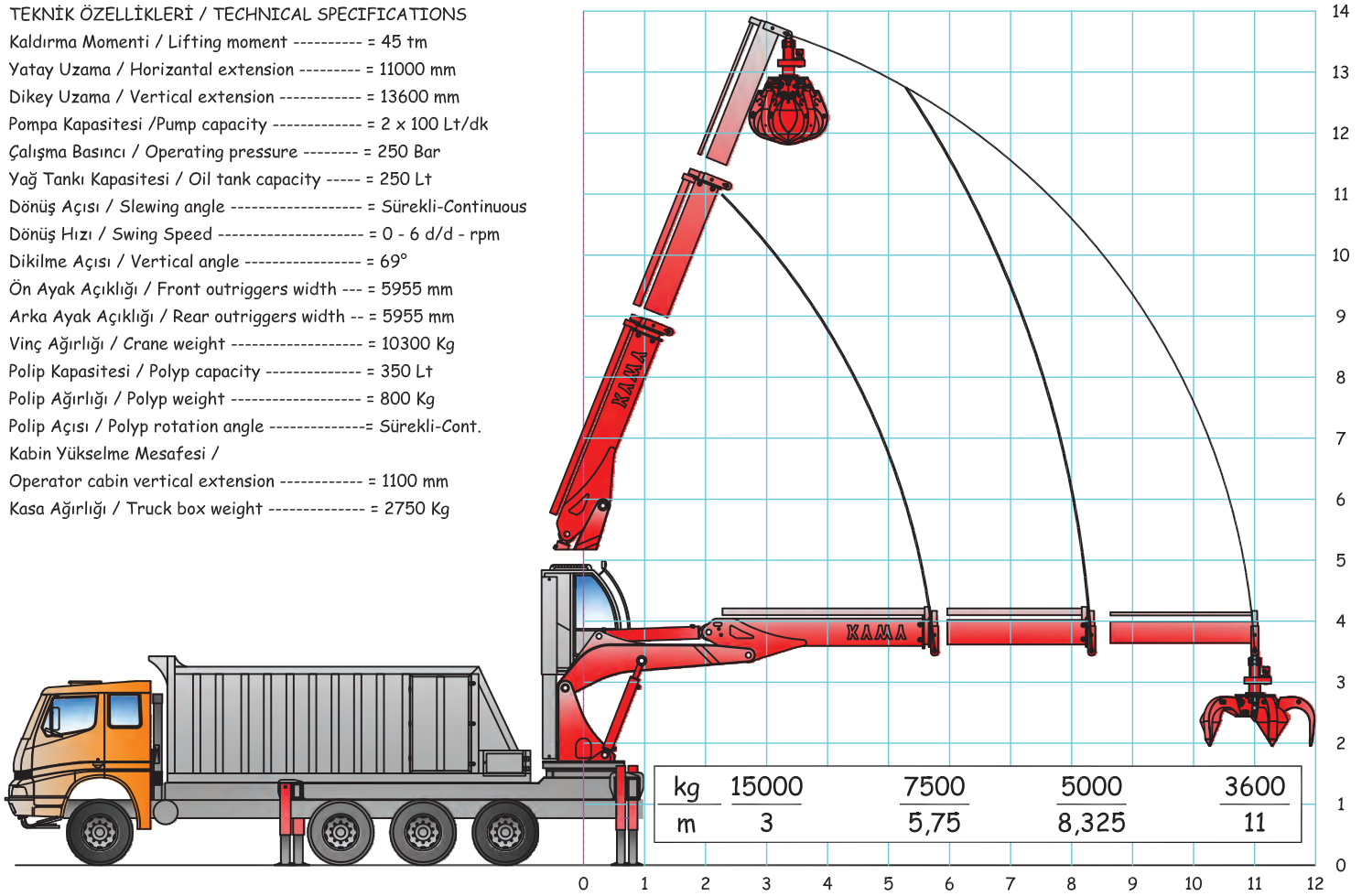
KM 300-L1-HU2 - 350 Lt hurda polibi - Bursa
KM 300-L1-HU2 - 350 Lt polyp grab - Bursa

KM 450 L2 HU-2

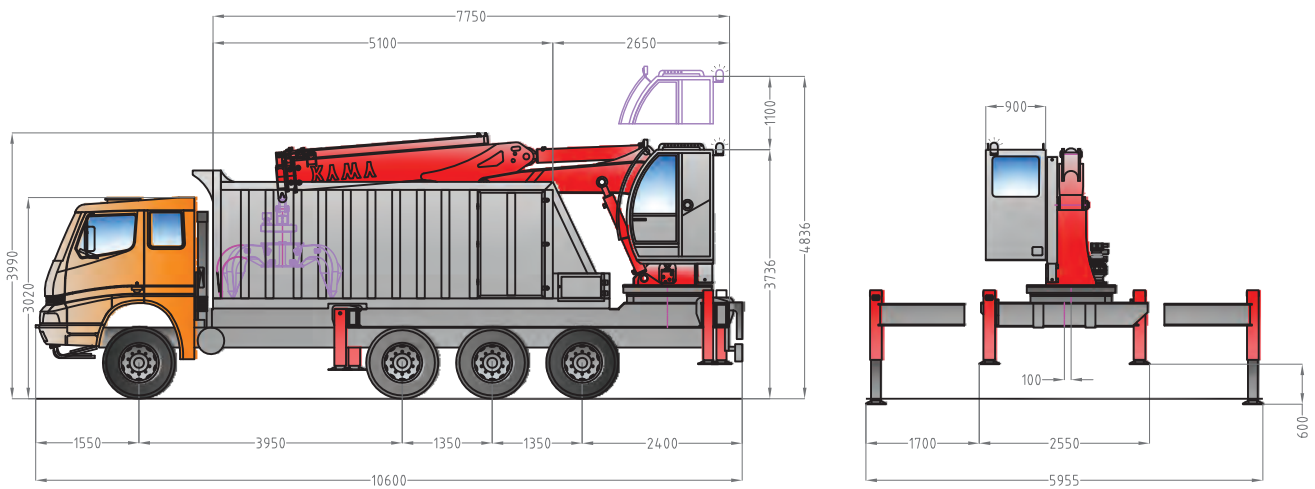
Malzeme Taşıma Makinesi
Material Handling Machine

TEKNİK ÖZELLİKLERİ / TECHNICAL SPECIFICATIONS

Kaldırma Momenti / Lifting moment	= 45 tm
Yatay Uzama / Horizontal extension	= 11000 mm
Dikey Uzama / Vertical extension	= 13600 mm
Pompa Kapasitesi / Pump capacity	= 2 x 100 Lt/dk
Çalışma Basıncı / Operating pressure	= 250 Bar
Yağ Tankı Kapasitesi / Oil tank capacity	= 250 Lt
Dönüş Açısı / Slewing angle	= Sürekli-Continuous
Dönüş Hızı / Swing Speed	= 0 - 6 d/d - rpm
Dikilme Açısı / Vertical angle	= 69°
Ön Ayak Açıklığı / Front outriggers width	= 5955 mm
Arka Ayak Açıklığı / Rear outriggers width	= 5955 mm
Vinç Ağırlığı / Crane weight	= 10300 Kg
Polip Kapasitesi / Polyp capacity	= 350 Lt
Polip Ağırlığı / Polyp weight	= 800 Kg
Polip Açısı / Polyp rotation angle	= Sürekli-Cont.
Kabin Yükselme Mesafesi / Operator cabin vertical extension	= 1100 mm
Kasa Ağırlığı / Truck box weight	= 2750 Kg



NOT = KALDIRILACAK YÜK ATAŞMAN AĞIRLIĞI KADAR AZALTIKILDIR. / THE POLYP GRAB IS PART OF LIFTING CAPACITY.





KM 450-L2-HU2 - 350 Lt hurda polibi - Konya
KM 450-L2-HU2 - 350 Lt polyp grab - Konya



KM 450-L2-HU2 - 450 Lt hurda polibi - Siirt
KM 450-L2-HU2 - 450 Lt polyp grab - Siirt



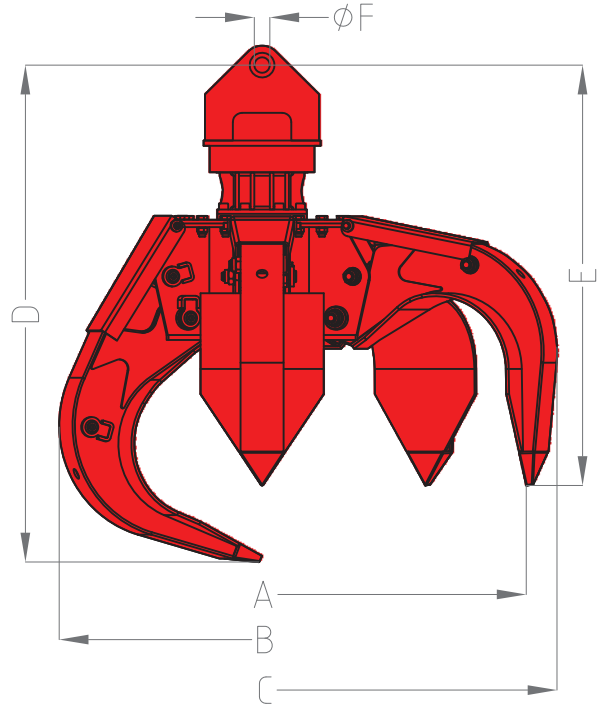
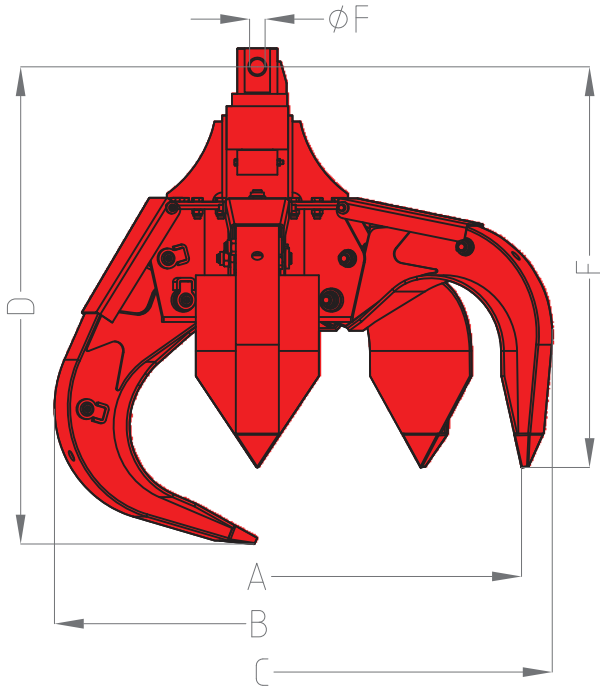
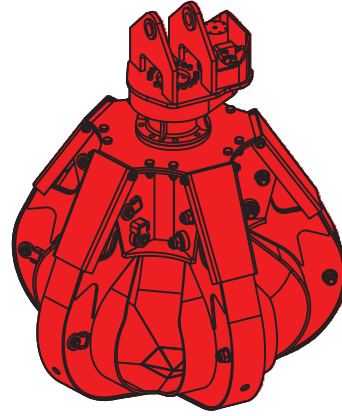
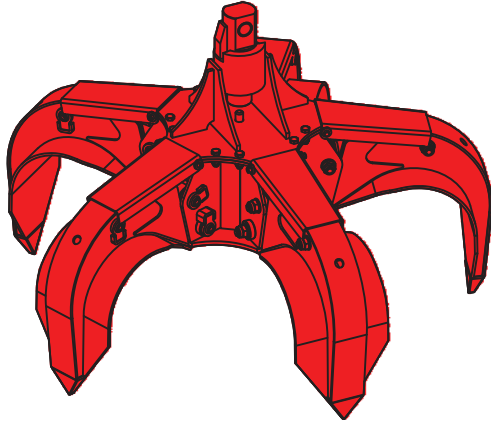
Farklı ekskavatör üreticisi firmaların ürünleri üzerinde kullanıcı ihtiyacına göre değişiklikler yapılmaktadır.

- Bom boylarının arttırılması
- Tahrik sisteminin dönüştürülmesi
- Operatör kabınınin yukarı-aşağı hidrolik olarak hareketli hale getirilmesi
- Bom ucuna taşman takılması, vb.

According to customer's needs and preferences changes to the machines of different excavator producers are made.

- Excavator's boom length can be extended
- Propulsion systems are changed
- An operator cab can be made moving up and down via hydraulic
- Polyps are produced and attached to excavator's boom

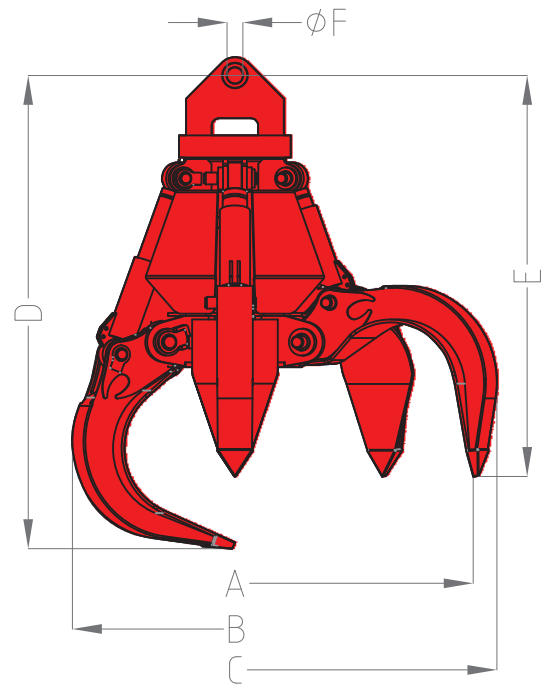
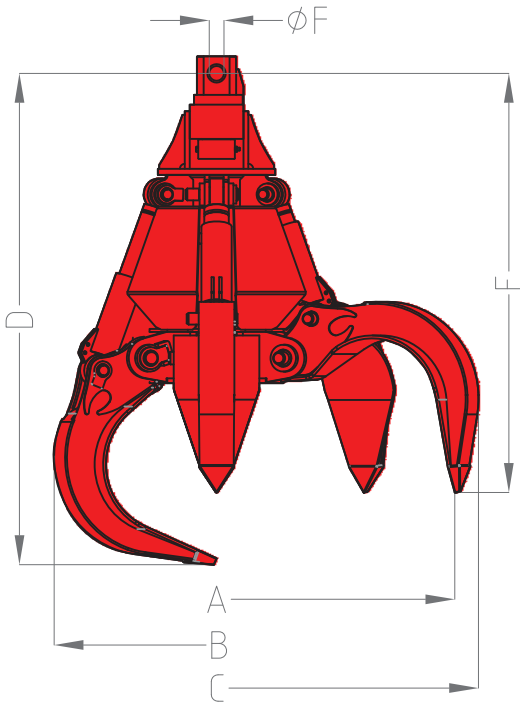
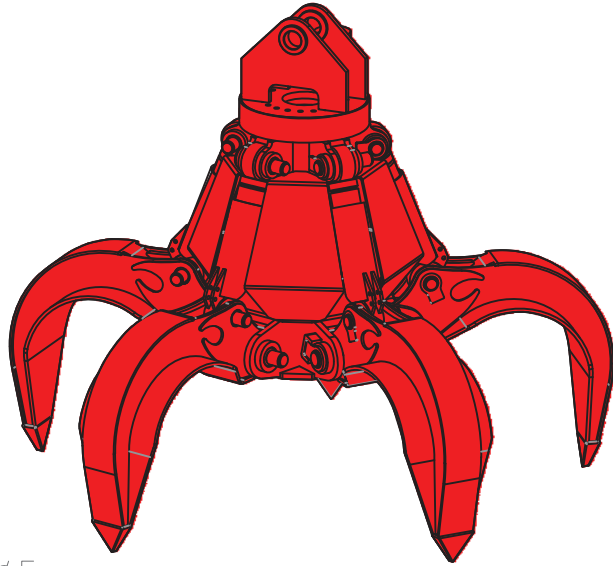




M : Mekanik dönerli tip/ mechanical rotary type
 S : Sabit mapalı tip / fixed type
 D : Dişli dönerli tip / Threaded rotary type

MODEL / MODEL	L	200 - A		250 - A		350 - A		450 - A		600 - A	
		M&S	D	M&S	D	M&S	D	M&S	D	M&S	D
KAPASİTE / CAPACITY		200	200	250	250	350	350	450	450	450	450
AYAK SAYISI / TEETH NO.		4,5	4,5	4,5	4,5	4,5	4,5	4,5	4,5	4,5	4,5
AĞIRLIK / WEIGHT	kg	470	550	600	700	800	900	900	1000	1350	1450
KALDIRMA KAPASİTESİ / LIFTING CAPACITY	kg	1300	1300	1500	1500	2000	2000	2500	2500	2800	2800
ÇALIŞMA BASINCI / OPERATING PRESURE	bar	280	280	280	280	280	280	280	280	280	280
ÖLÇÜLER / DIMENSIONS	A	1533	1533	1635	1635	1815	1815	1960	1960	2220	2220
	B	1073	1073	1145	1145	1340	1340	1380	1380	1535	1535
	C	1672	1672	1785	1785	1970	1970	2100	2100	2400	2400
	D	1248	1320	1405	1475	1550	1600	1605	1710	1755	1825
	E	983	1055	1150	1225	1275	1325	1300	1400	1335	1405
	F	40-50	40-65	40-50	40-65	40-50	40-65	40-50	40-65	50-65	65

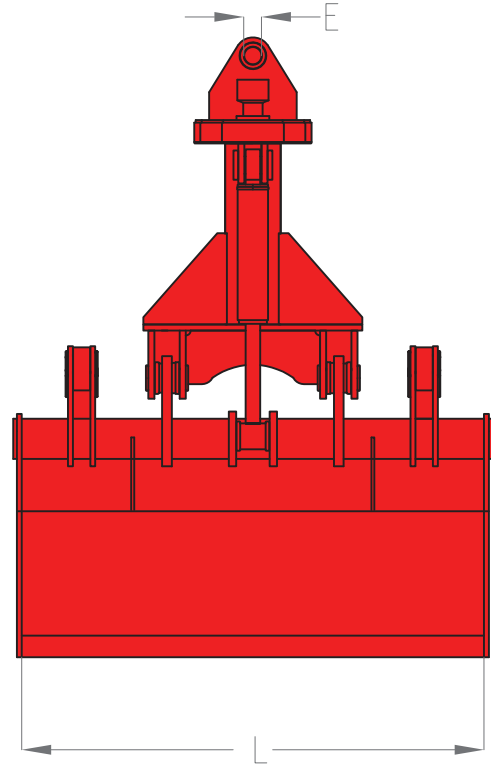
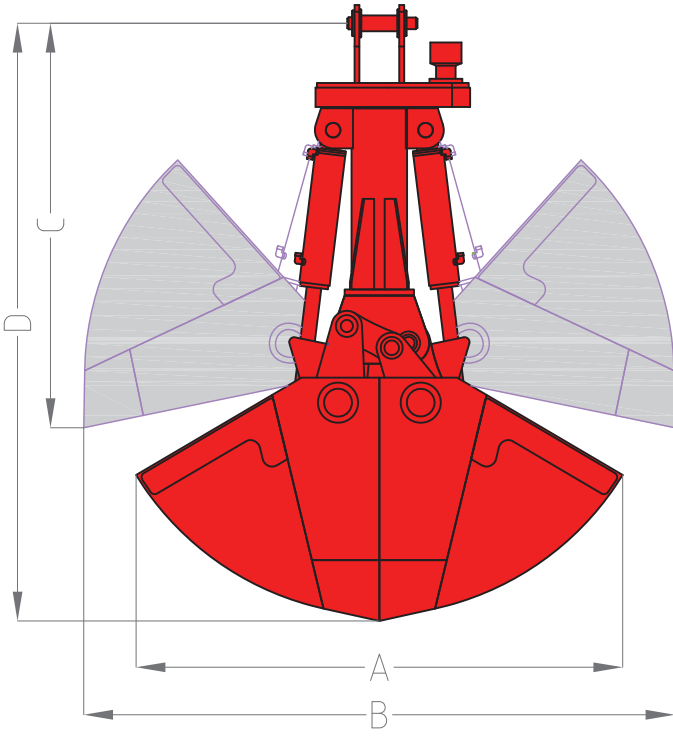
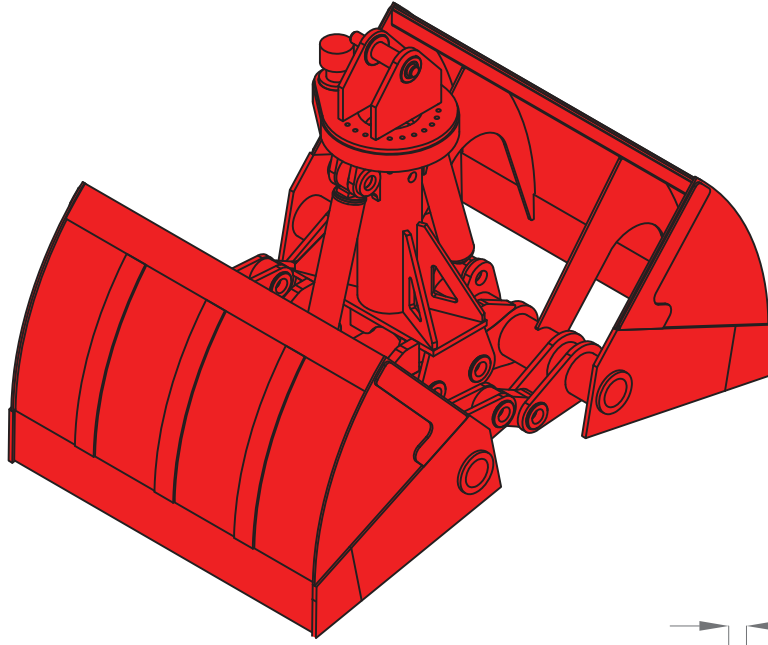




M : Mekanik dönerli tip / mechanical rotary type
 S : Sabit mapalı tip / fixed type
 D : Dişli dönerli tip / Threaded rotary type

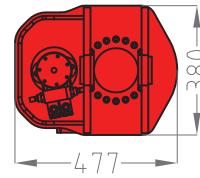
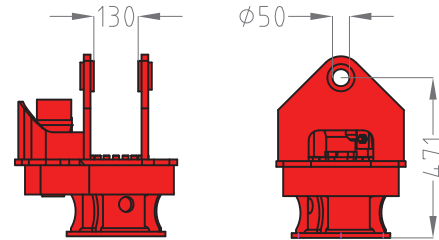
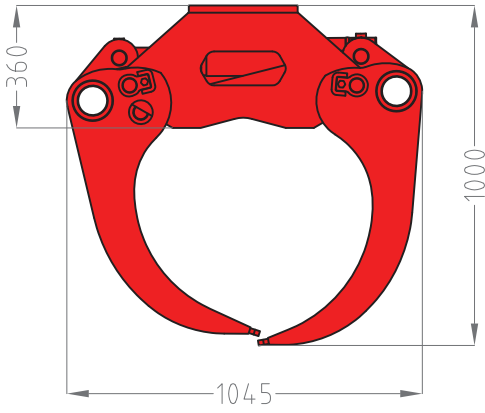
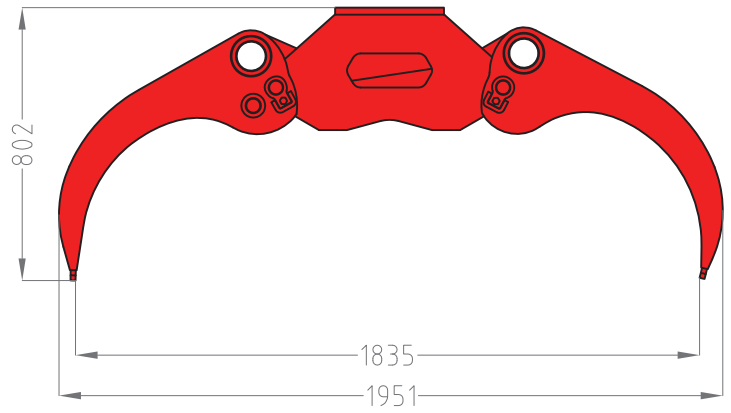
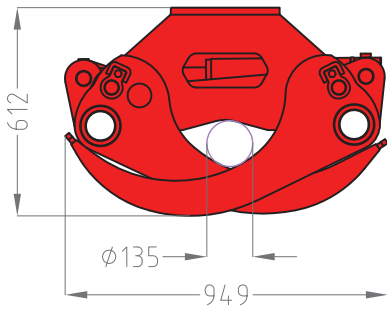
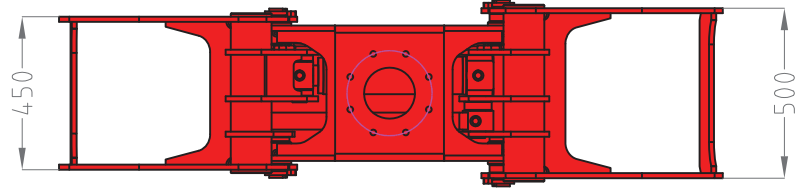
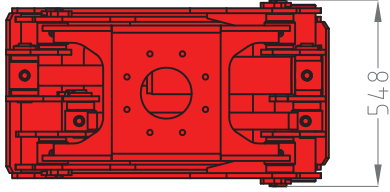
MODEL / MODEL	250B		350B		450B		600B		900B		1600B		
	M&S	D	M&S	D	M&S	D	S	D	S	D	S	D	
KAPASİTE / CAPACITY	L	250	250	350	350	450	450	600	600	900	900	1600	1600
AYAK SAYISI / TEETH NO.		5	5	5	5	5	5	5	5	5	5	5	5
AĞIRLIK / WEIGHT	kg	770	900	950	1070	1300	1350	1600	1650	1800	1850	2300	2350
KALDIRMA KAPASİTESİ / LIFTING CAPACITY	kg	2000	2000	3000	3000	4000	4000	4500	4500	6000	6000	7000	7000
ÇALIŞMA BASINCI / OPERATING PRESURE	kg	280	280	280	280	280	280	280	280	280	280	280	280
ÖLÇÜLER / DIMENSIONS	A	1680	1680	1876	1876	2000	2000	2220	2220	2400	2400	2660	2660
	B	1173	1173	1278	1278	1350	1350	1480	1480	1700	1700	1980	1980
	C	1781	1781	1976	1976	2190	2190	2330	2330	2550	2550	2945	2945
	D	1688	1688	1862	1862	2040	1950	2250	2035	2540	2300	2400	2450
	E	1440	1440	1560	1560	1700	1650	1900	1680	2040	1800	1800	1850
	F	50	65	50	65	60	65	65	65	65	65	65	65





MODEL / MODEL		KK 1.0 - B	KK 1.2 - B	KK 1.5 - B	KK 1.7 - B	KK 2.0 - B	KK 2.5 - B	KK 3.0 - B	KK 4.0 - B
KAPASİTE / CAPACITY	lt	1000	1200	1500	1700	2000	2500	3000	4000
AĞIRLIK / WEIGHT	Kg	1200	1400	1500	1800	2260	2350	2500	3800
ÇALIŞMA BASINCI / OPERATING PRESSURE	bar	300	300	300	300	300	300	300	300
ÖLÇÜLER / DIMENSIONS	A	1650	1650	1900	2000	2000	2000	2000	2640
	B	1930	1930	2362	2430	2430	2430	2430	3214
	C	1590	1590	1601	1662	1662	1662	1662	2296
	D	2180	2180	2352	2456	2456	2456	2456	2986
	E	65	65	65	65	65	70	70	80
	L	1400	1500	1340	1370	1600	1900	2400	2170





KM 318D / 120 kg

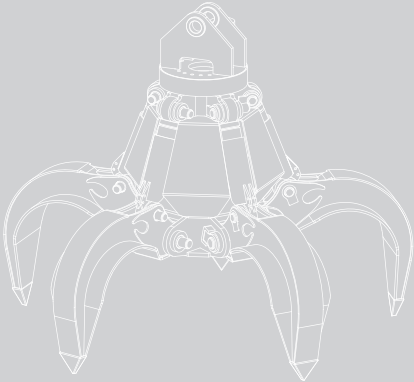
ÖZELLİKLER / SPECIFICATIONS

Kavrama alanı / Gripping area	= 0.35 m ²
Yük kapasitesi / Load capacity	= 4000 kg
Max. çalışma basıncı / Max. operat. pressure	= 250 bar
Ağırlık (döndürücü hariç) / Dead weight (without rotator)	= 310 kg









KAMA

VİNÇ ELLEÇLEME VE HİDROLİK
İŞ MAKİNELERİ SAN. TİC. A. Ş.

ŞEKERPINAR MAH. FATİH SULTAN MEHMET CAD.
NO : 70 - 41420 ÇAYIROVA-KOCAELİ-TÜRKİYE
TEL: +9 0262 658 29 01 Pix. FAKS: +9 0262 658 29 39-49
www.kamavinc.com info@kamavinc.com

KAMA